

Connecting Fittings

KNAPP®

Quality, simplicity,
guarantee

EXCLUSIVELY IN

 **Demos**

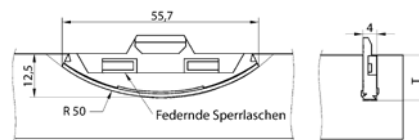
All for the furniture making



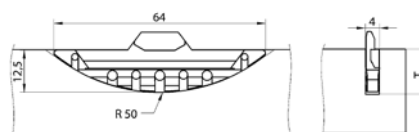
Plug-in and Compact Connection

- No need for special tools to install the biscuits
- Cost-effective
- Option for all types of wood or wood-based materials
- Not only plug-in, but also snap-on connections
- Easy installation of ready-to-assemble parts for the assembly – basically tool-free

Plastic Plug-in Joint



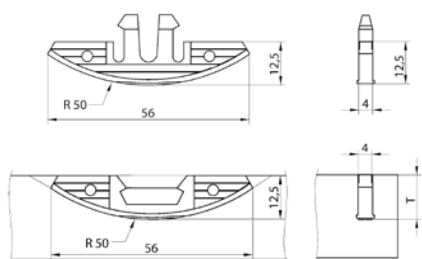
463414 | K053 SUNNY plug-in joint (plastic)



463415 | K023 CHAMP plug-in joint (plastic)

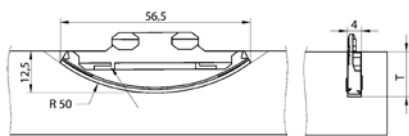
12345 Item in stock **12345** Item on demand

Plastic Compact Joint

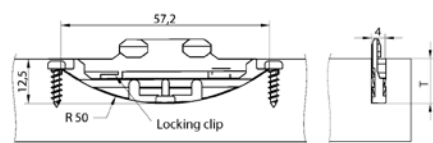


463416 | K058 FAST contact joint (plastic)

Metal Plug-in Joint



463413 | K049 SILVE plug-in joint (aluminium and zinc alloy)



463417 | K026 METAL plug-in joint (1 pair of biscuits, 2 x screw 3 x 13, 2 x screw 3 x 25)

QR code  YouTube video preview



The assortment can be found at:

www.demos-trade.com
www.demos24plus.com
mobile phone app

Equipment and Tools

Fittings catalogue (ch. 14) www.demos-trade.com

www.demos24plus.com

mobile phone app

Hinge

- Option with/without lateral will
- Simple connection – no special tools or skills required
- Easy attachment by simply snapping the components into place of installation
- Invisible joint – recessed and hidden
- Can be used with standard screws

UNO hinge



463412 | K120 UNO 30 stainless steel hinge

Accessories



459416 | K073 centre punch steel + plastic UNO 30



459415 | K121 locking clip for UNO 30

12345 Item in stock **12345** Item on demand

DUO Hinge



461769 | K070 DUO 30 ML hinge joint with lateral will



461770 | K074 DUO 30 OL hinge joint without lateral will



461771 | K041 DUO 46/15 mm, joint for wooden profiles

461772 | K036 DUO 62/15 mm, joint for wooden profiles

461773 | K055 DUO 100/15 mm, joint for wooden profiles



Accessories



459415 | K121 locking clip for DUO 30



459413 | K071 centre punch DUO 30

459414 | K075 centre punch DUO 30

QR code  YouTube video preview

Laminated Boards, Blockboards and Other Solid Materials

Boards, Edges, Adhesives catalogue
www.demos-trade.com
www.demos24plus.com
mobile phone app

High-Strength Joint – Non-Demountable

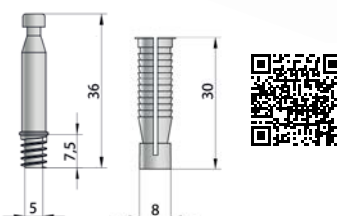
Safe – high load values:

- 60 kg for 19 mm chipboard
- 73 kg for 16 mm MDF
- 73 kg for 17 mm solid wood
- 85 kg for 17 mm beech wood

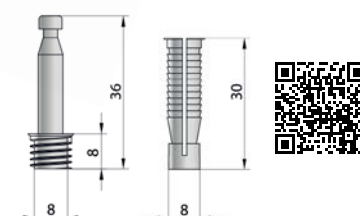
Concealed, Self-Locking Cabinet Body Joint

- Easy transport – elements of the cabinet body can be transported in individual parts. Final assembly is possible on site
- No gluing – due to the serrations on the outside of the plastic dowel and the anchoring of the steel screw at the base of the dowel, QUICK-SET requires no glue during use
- Can be used with an automatic dowel machine, CNC or dowel drill

QUICK-SET

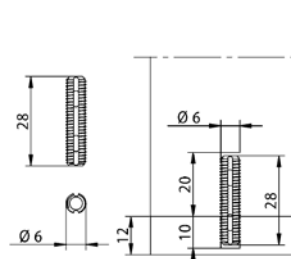


459417 | Z5058 QUICK-SET 5 mm
(dowel + pin connection)

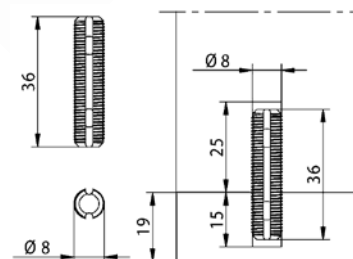


459418 | Z5057 QUICK-SET 8 mm
(dowel + pin connection)

Plastic dowel pin



459402 | K067 plastic dowel
pin 8 x 36



459403 | K169 plastic dowel
pin 8 x 50

Accessories



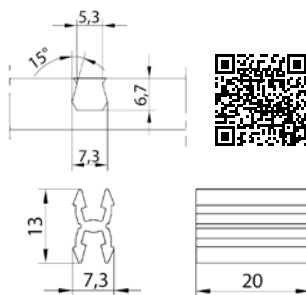
459410 | Z011 PU one-component
adhesive

KLICK Plastic Joint

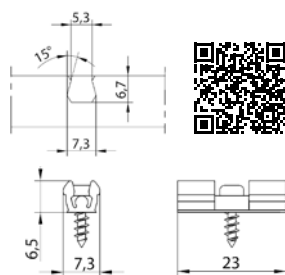
KLICK Plastic Joint



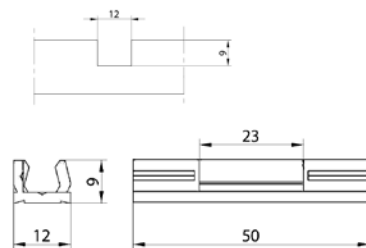
459397 | K045 KLICK plastic joint



459399 | K048 sKLICK plastic joint + screw



459400 | K060 CLICK for plastic edge joint



Accessories



459401 | K046/F TCT fish groove cutter 8 mm



35 Years of Experience

Considering the history of furniture production, 35 years is not that long. If anyone manages to rank among the top in the industry in this relatively short time, that's a good reason to be interested. The Austrian manufacturer of KNAPP fittings should definitely not be overlooked.

This company manufacturing connecting fittings for furniture was founded 35 years ago by Friedrich Knapp. The assortment was subsequently expanded to include components for joining staircases, wooden structures and other joinery and carpentry products. Today, KNAPP fittings are without exaggeration among the best that the market has to offer and we at Démos are pleased to be able to present their products to you as an **exclusive partner**.

Practical Connections

Let's start with the biscuits. These will be appreciated by any manufacturer looking for a strong connection with minimal work. If you choose KNAPP biscuits, you don't need **any special tool**, in fact, a classic angle grinder is sufficient. Most of the biscuits offered do not even need to be glued. Thanks to their special shape, they "bite" into the material. Some models can even be disconnected again. In the Démos offer you will find new biscuits – SUNNY, SILVER, CHAMP, METAL and FAST.

If you are involved in the manufacture of staircases or panelling, you will certainly be interested in the UNO and DUO connectors. These joints are simple, strong enough and can be disassembled. The DUO model can also be used to connect a bed frame. UNO is suitable for hanging panelling or, for example, a high skirting board. It is easy to disassemble and the locking clip can prevent accidental unhinging.

Strength of Two-Piece Locking Pin

The QUICK-SET system ensures fast, precise and tight connection of the cabinet body. It is a metal draw bar, very similar to the classic draw bars in excenters, and a plastic counterpart that the draw bar bumps into. To give you a better idea, it works as if you connect the excenters and push them into the pin hole, where they are fixed firmly and inseparably.

Other new products in our range include the KCLICK connecting system, which enables simple installation of decorative elements or the connection of two parts in an unstressed joint, or plastic pins, which are excellent for outdoor use or for connecting compact panels. But this is not the end of the list of KNAPP products that should not escape your attention.

If you try any of the KNAPP products, we will be very happy if you share your experience with us!



www.demos-trade.com

Démos Trade, a.s.

Škrobálkova 630/13, 718 00 Ostrava-Kunčičky

Customer Service Centre

T +420 556 684 310 E export@demos-trade.com