



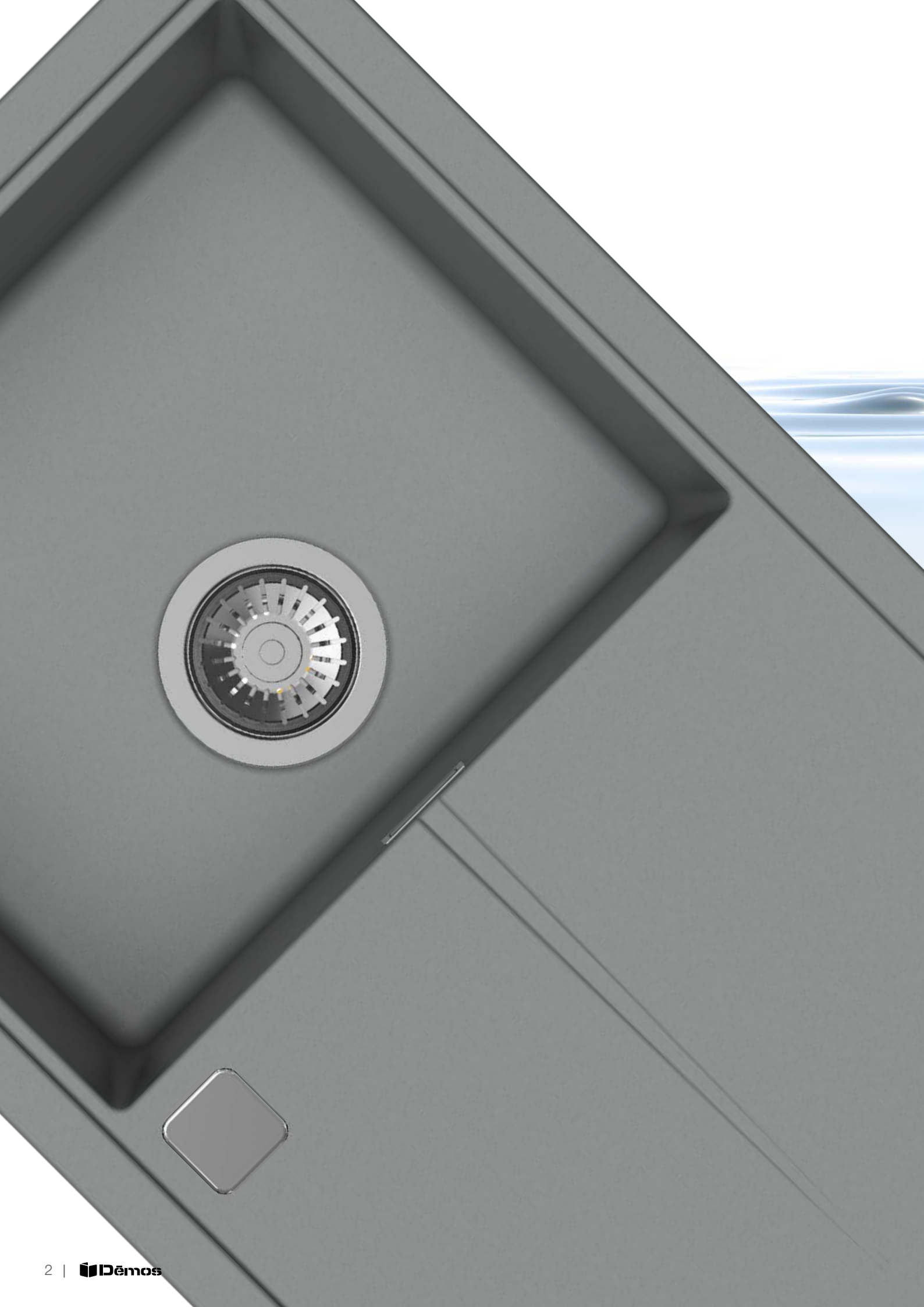
StrongSinks

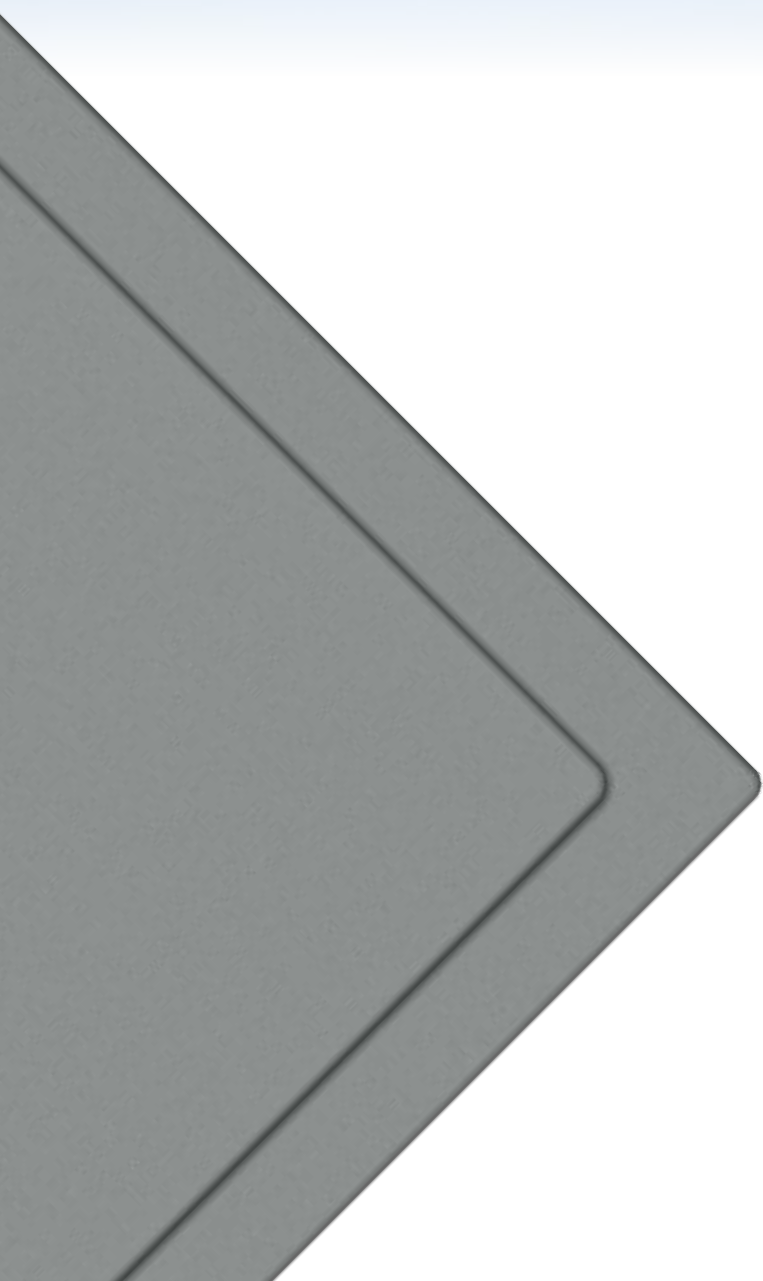
The Perfect Kitchen Sink



 **Demos**

All for the furniture making





StrongSinks S3

Granite Kitchen Sinks

Material composition:

- 80% natural quartz;
- 20% acrylic resin;
- dye.

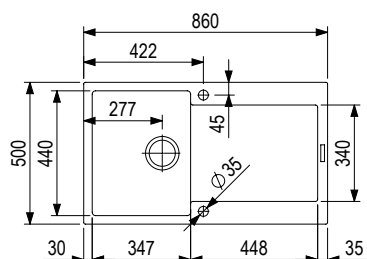
Benefits of quartz kitchen sink:

- durable and resistant to heat (up to 280°C), scratches, stains and impact;
- its smooth surface is easy to clean and maintain;
- its natural sound insulation absorbs noise;
- hygienic and resistant to bacteria and odour;
- retains its colour and uniformity throughout its life;
- available in several colour options.

StrongSinks S3

Granite Kitchen Sinks





Zala 800

- 491377** | Black
- 491391** | Grey
- 491399** | Brown
- 491408** | White

- dimensions: 860 × 500 mm
- cut-out: 840 × 480 mm
- basin: 347 × 440 mm
- depth: 200 mm

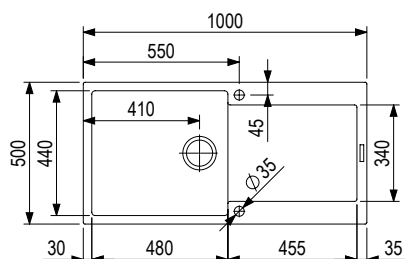
Accessories

- space saving siphon



Optional accessories

- 492717** | Space saving siphon with drain remote control
- 491385** | Stainless steel drip tray
- 491387** | Roller mat 490 × 277 mm



Zala 1000

- 491378** | Black
- 491392** | Grey
- 491400** | Brown
- 491409** | White

- dimensions: 1,000 × 500 mm
- cut-out: 980 × 480 mm
- basin: 480 × 440 mm
- depth: 200 mm

Accessories

- space saving siphon



Optional accessories

- 492717** | Space saving siphon with drain remote control
- 491385** | Stainless steel drip tray
- 491387** | Roller mat 490 × 277 mm

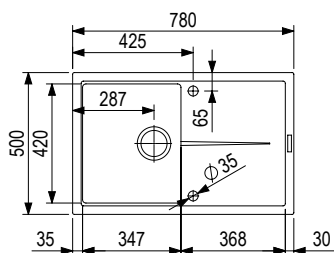
Explanatory notes



StrongSinks S3

Granite Kitchen Sinks





When using a tall kitchen tap on a drip tray, they may have a slight tilt.

Labe 780

- 491379** | Black
- 491393** | Grey
- 491401** | Brown
- 491410** | White

- dimensions: 780 × 500 mm
- cut-out: 760 × 480 mm
- basin: 347 × 420 mm
- depth: 205 mm

Accessories

- space saving siphon



Optional accessories

- 492717** | Space saving siphon with drain remote control
- 491386** | Stainless steel drip tray
- 491387** | Roller mat 490 × 277 mm

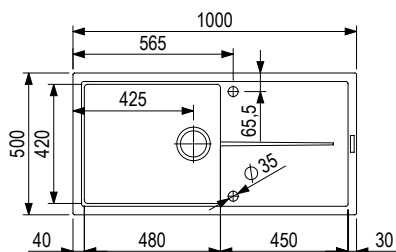
Labe 1000

- 491380** | Black
- 491394** | Grey
- 491402** | Brown
- 491411** | White

- dimensions: 1,000 × 500 mm
- cut-out: 980 × 480 mm
- basin: 480 × 420 mm
- depth: 205 mm

Accessories

- space saving siphon

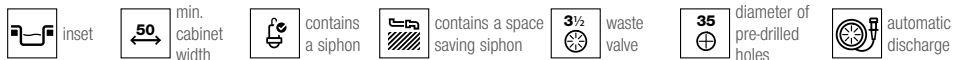


When using a tall kitchen tap on a drip tray, they may have a slight tilt.

Optional accessories

- 492717** | Space saving siphon with drain remote control
- 491386** | Stainless steel drip tray
- 491387** | Roller mat 490 × 277 mm

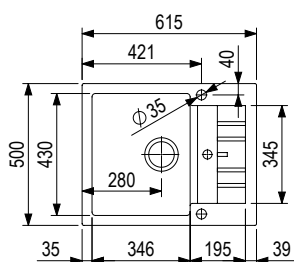
Explanatory notes



StrongSinks S3

Granite Kitchen Sinks





Vardar 615

- 491381** | Black
- 491395** | Grey
- 491403** | Brown
- 491412** | White

- dimensions: 615 × 500 mm
- cut-out: 595 × 480 mm
- basin: 346 × 430 mm
- depth: 198 mm

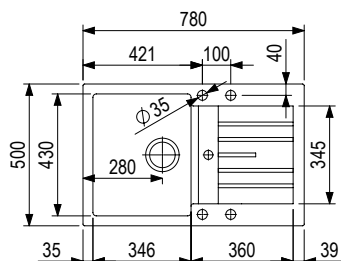
Accessories

- space saving siphon with drain remote control



Optional accessories

- 491387** | Roller mat 490 × 277 mm



Vardar 780

- 491382** | Black
- 491396** | Grey
- 491404** | Brown
- 491413** | White

- dimensions: 780 × 500 mm
- cut-out: 760 × 480 mm
- basin: 346 × 430 mm
- depth: 198 mm

Accessories

- space saving siphon with drain remote control



Optional accessories

- 491387** | Roller mat 490 × 277 mm

Explanatory notes



inset



50 min. cabinet width



contains a siphon



contains a space saving siphon



3 1/2 waste valve



35 diameter of pre-drilled holes

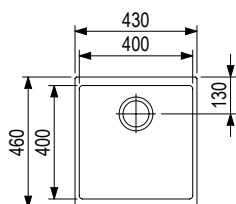


automatic discharge

StrongSinks S3

Granite Kitchen Sinks





Hron 430

- 491383** | Black
- 491397** | Grey
- 491406** | Brown
- 491414** | White

- dimensions: 430 × 460 mm
- cut-out for inset installation: 420 × 444 mm
- cut-out for undermount installation: 400 × 400 mm
- basin: 400 × 400 mm
- depth: 200 mm

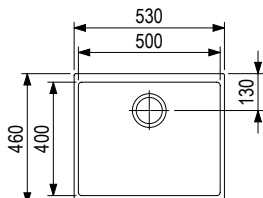
Accessories

- space saving siphon



Optional accessories

- 492721** | Stainless steel drip tray
- 491388** | Roller mat 400 × 277 mm



Hron 530

- 491384** | Black
- 491398** | Grey
- 491407** | Brown
- 491415** | White

- dimensions: 530 × 460 mm
- cut-out for inset installation: 520 × 444 mm
- cut-out for undermount installation: 500 × 400 mm
- basin: 500 × 400 mm
- depth: 200 mm

Accessories

- space saving siphon



Optional accessories

- 492721** | Stainless steel drip tray
- 491388** | Roller mat 400 × 277 mm

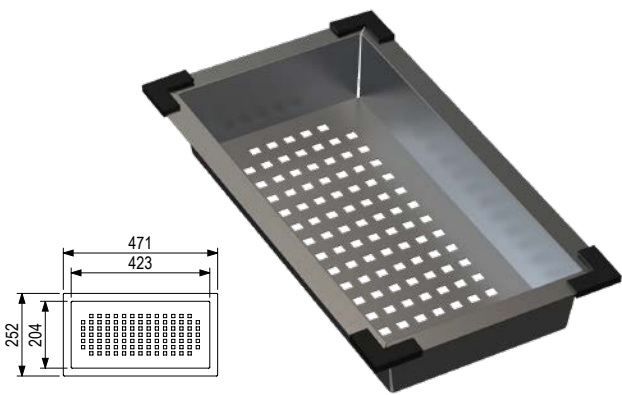
Explanatory notes

- inset
- undermount
- levelled assembly
- 50 min. cabinet width
- contains a siphon
- contains a space saving siphon
- 3 1/2 waste valve
- 35 diameter of pre-drilled holes

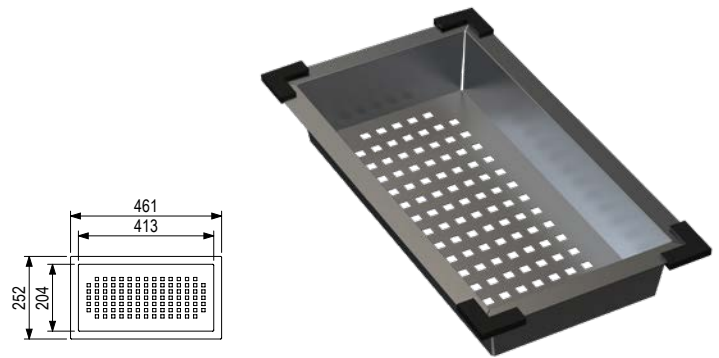
StrongSinks S3

Granite Kitchen Sinks

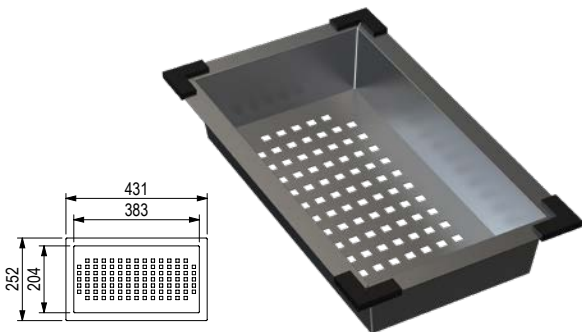
Optional accessories



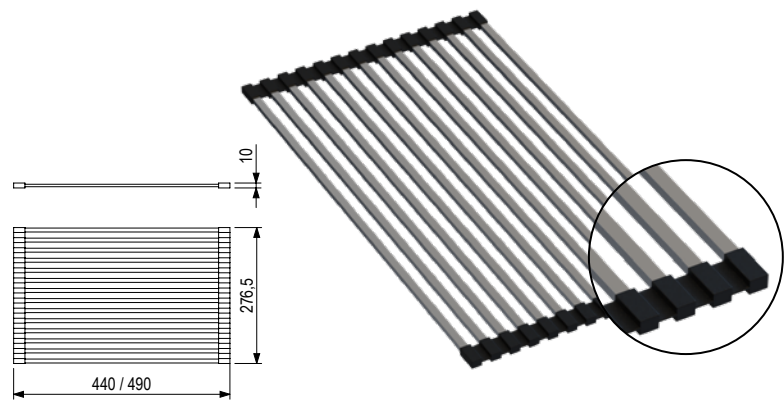
491385 | Stainless steel drip tray
471 × 252 × 75 mm



491386 | Stainless steel drip tray
461 × 252 × 75 mm



492721 | Stainless steel drip tray
431 × 252 × 75 mm



491387 | Roller mat 490 × 277 mm

491388 | Roller mat 440 × 277 mm

Colour design



492715 | Space saving siphon



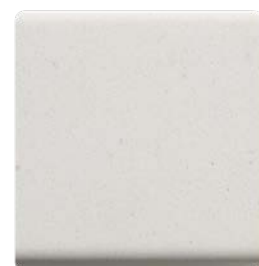
Black



Grey



Brown



White



492717 | Space saving siphon with drain remote control



505774 | Granite sample





StrongSinks S3

Stainless Steel Kitchen Sinks

- Thanks to the premium quality chrome-plated steel (AISI 304 18/8 Cr-Ni.), the kitchen sinks are highly resistant to stains, rust and corrosion.
- The kitchen sinks are naturally hygienic and bacteria do not settle in them.
- A passive protective layer is formed on the surface of the stainless steel, which is constantly renewed, making the kitchen sink easy to clean and maintain.
- It is resistant to temperatures and acids.
- 100% recyclable
- The package includes mounting clips for all types of installation (undermount, inset and flushmount) and a space saving siphon.

StrongSinks S3

Stainless Steel
Kitchen Sinks





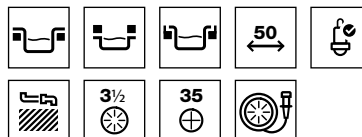
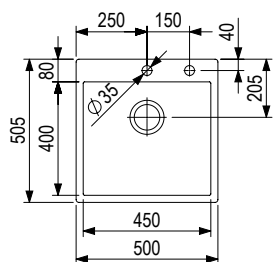
Duna 500

482140 | Stainless steel kitchen sink, inset/flushmount

- dimensions: 500 × 505 mm
- cut-out: 486 × 491 mm
- basin: 450 × 400 mm
- sink depth: 203 mm
- sheet thickness: 1.2 mm

Accessories

- space saving siphon with drain remote control
- tap hole cover



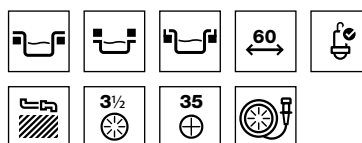
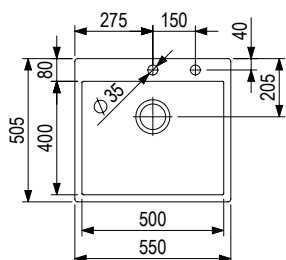
Duna 550

482139 | Stainless steel kitchen sink, inset/flushmount

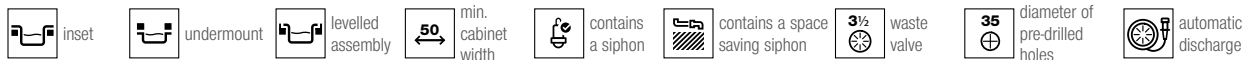
- dimensions: 550 × 505 mm
- cut-out: 536 × 491 mm
- basin: 500 × 400 mm
- sink depth: 203 mm
- thickness: 1.2 mm

Accessories

- space saving siphon with drain remote control
- tap hole cover



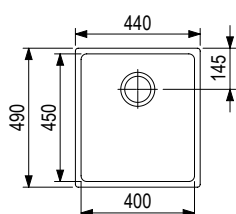
Explanatory notes



StrongSinks S3

Stainless Steel
Kitchen Sinks





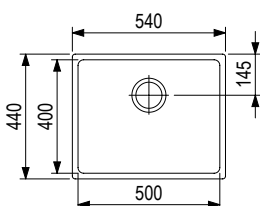
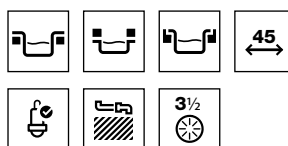
Eden 440

482145 | Stainless steel sink, inset/undermount/flushmount

- cut-out for undermount installation: 396 × 446 mm
- sink depth: 215 mm
- thickness: 1 mm

Accessories

- space saving siphon



Eden 540

482144 | Stainless steel sink, inset/undermount/flushmount

- dimensions: 540 × 440 mm
- cut-out for undermount installation: 496 × 396 mm
- basin: 500 × 400 mm
- sink depth: 215 mm
- sheet thickness: 1 mm

Accessories

- space saving siphon



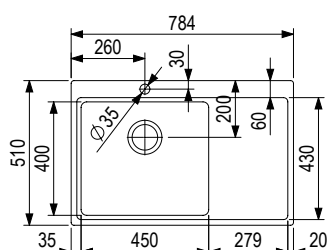
Explanatory notes



StrongSinks S3

Stainless Steel
Kitchen Sinks





Nida

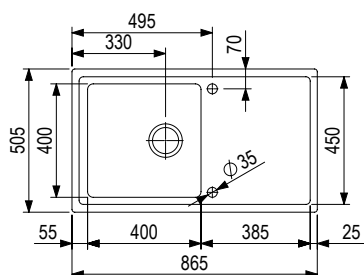
482143 | With tap hole, draining board on the right

482142 | With tap hole, draining board on the left

- dimensions: 784 × 510 mm
- cut-out for inset installation: 776 × 502.5 mm
- basin: 450 × 400 mm
- sink depth: 235 mm
- thickness: 1 mm

Accessories

- space saving siphon



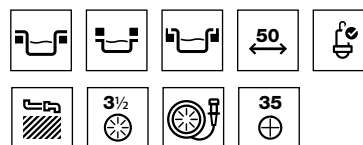
Dnipro

482141 | Right-left with tap hole

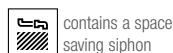
- dimensions: 865 × 505 mm
- cut-out for inset installation: 851 × 491 mm
- basin: 400 × 400 mm
- sink depth: 235 mm
- thickness: 1 mm

Accessories

- space saving siphon with drain remote control
- tap hole cover



Explanatory notes



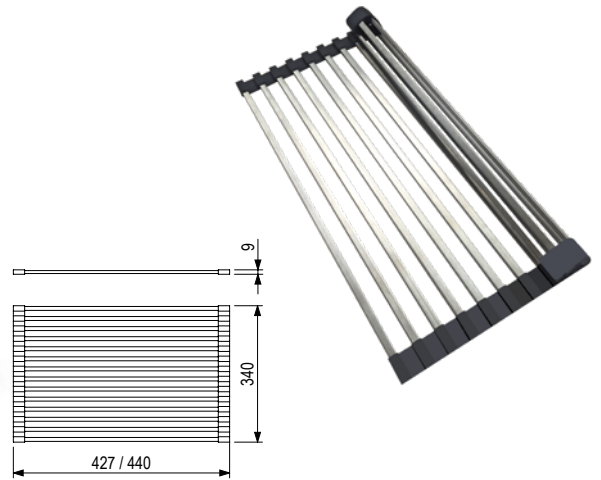
StrongSinks S3

Stainless Steel Kitchen Sinks

Optional accessories



489798 | Detergent dispenser for stainless steel S3 sinks, volume 300 ml



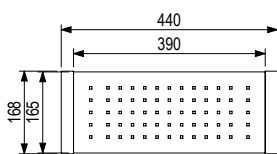
487893 | Roller mat 427 × 340 mm

487894 | Roller mat 440 × 340 mm

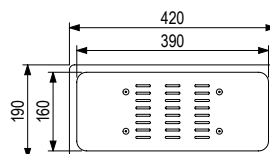


487897 | Tap hole cover for stainless steel kitchen sinks

487900 | Valve cover for stainless steel kitchen sinks



487892 | Stainless steel / plastic drip tray, for kitchen sinks 482139, 482140, 482141, 482144



487891 | Stainless steel drip tray, for kitchen sinks 482141, 482142, 482143, 482144



482705 | Space saving siphon for stainless steel kitchen sinks



495506 | Space saving siphon with drain remote control

Kitchen Taps

StrongSinks





Ipoly

496354 | Lever on the side, black matt

Kitchen tap type

- No shower
- Cartridge with ceramic gasket
- High arm for easy filling of pots

Description

- Swivel mixer kitchen tap
- Pressure type
- 360° swivel
- Connection: 50 cm long hoses with 3/8" diameter
- A hole diameter of 35 mm is required
- Cartridge with ceramic gasket
- Stabilising plate increases the stability of the kitchen tap

The package includes

- Sink kitchen tap
- Connection hoses
- Installation package
- Installation instructions



Stréva

496353 | Lever on the side, polished chrome

Kitchen tap type

- No shower
- Cartridge with ceramic gasket
- High arm for easy filling of pots

Description

- Swivel mixer kitchen tap
- Pressure type
- 360° swivel
- Connection: 50 cm long hoses with 3/8" diameter
- A hole diameter of 35 mm is required
- Cartridge with ceramic gasket
- Stabilising plate increases the stability of the kitchen tap

The package includes

- Sink kitchen tap
- Connection hoses
- Installation package
- Installation instructions

Kitchen Taps

StrongSinks



Zajas

496350 | Polished chrome

Kitchen tap type

- No shower
- Compact size, designed for smaller kitchen sinks

Description

- Swivel mixer kitchen tap
- Pressure type
- 360° swivel
- Connection: 50 cm long hoses with 3/8" diameter
- A hole diameter of 35 mm is required
- Cartridge with ceramic gasket

The package includes

- Sink kitchen tap
- Connection hoses
- Installation package
- Installation instructions



Seina

496351 | Lever on the side, polished chrome

Kitchen tap type

- No shower
- Compact size, designed for smaller kitchen sinks

Description

- Swivel mixer kitchen tap
- Pressure type
- 360° swivel
- Connection: 50 cm long hoses with 3/8" diameter
- A hole diameter of 35 mm is required
- Cartridge with ceramic gasket
- Stabilising plate increases the stability of the kitchen tap

The package includes

- Sink kitchen tap
- Connection hoses
- Installation package
- Installation instructions



Rhona

496352 | Lever on the side, polished chrome

Kitchen tap type

- No shower
- Cartridge with ceramic gasket
- High arm for easy filling of pots

Description

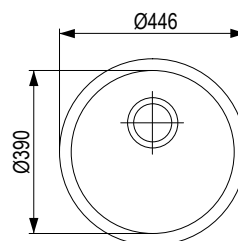
- Swivel mixer kitchen tap
- Pressure type
- 360° swivel
- Connection: 50 cm long hoses with 3/8" diameter
- A hole diameter of 35 mm is required
- Cartridge with ceramic gasket
- Stabilising plate increases the stability of the kitchen tap

The package includes

- Sink kitchen tap
- Connection hoses
- Installation package
- Installation instructions

StrongSinks S1

Stainless Steel Kitchen Sinks

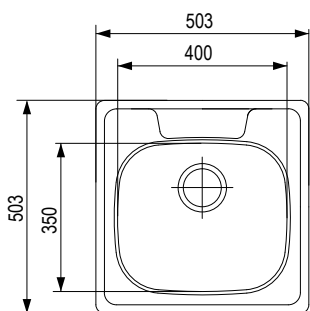


Ondava

505999 | Polished stainless steel, round, inset installation

- dimension: \varnothing 446 mm
- cut-out: \varnothing 418 mm
- basin: \varnothing 390 mm
- sink depth: 185 mm
- sheet thickness: 0.7 mm

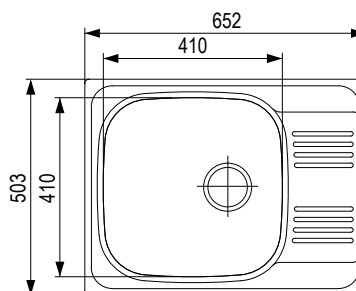




Tyne

505997 | Polished stainless steel, inset installation

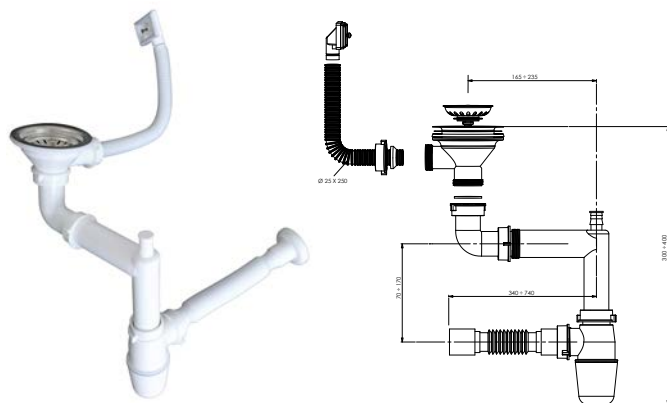
- dimensions: 503 × 503 mm
- cut-out: 489 × 489 mm
- basin: 400 × 350 mm
- sink depth: 190 mm
- sheet thickness: 0.7 mm



Odra

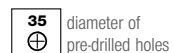
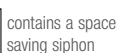
506001 | Polished stainless steel, inset installation

- dimensions: 652 × 503 mm
- cut-out: 638 × 489 mm
- basin: 410 × 410 mm
- sink depth: 175 mm
- sheet thickness: 0.7 mm



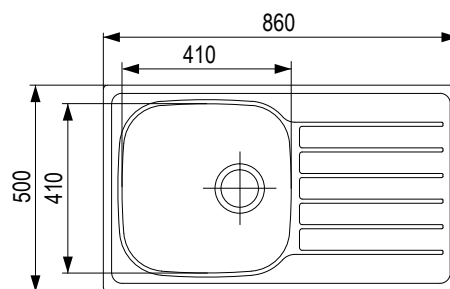
482705 | Space saving siphon for stainless steel kitchen sinks

Explanatory notes



StrongSinks S1

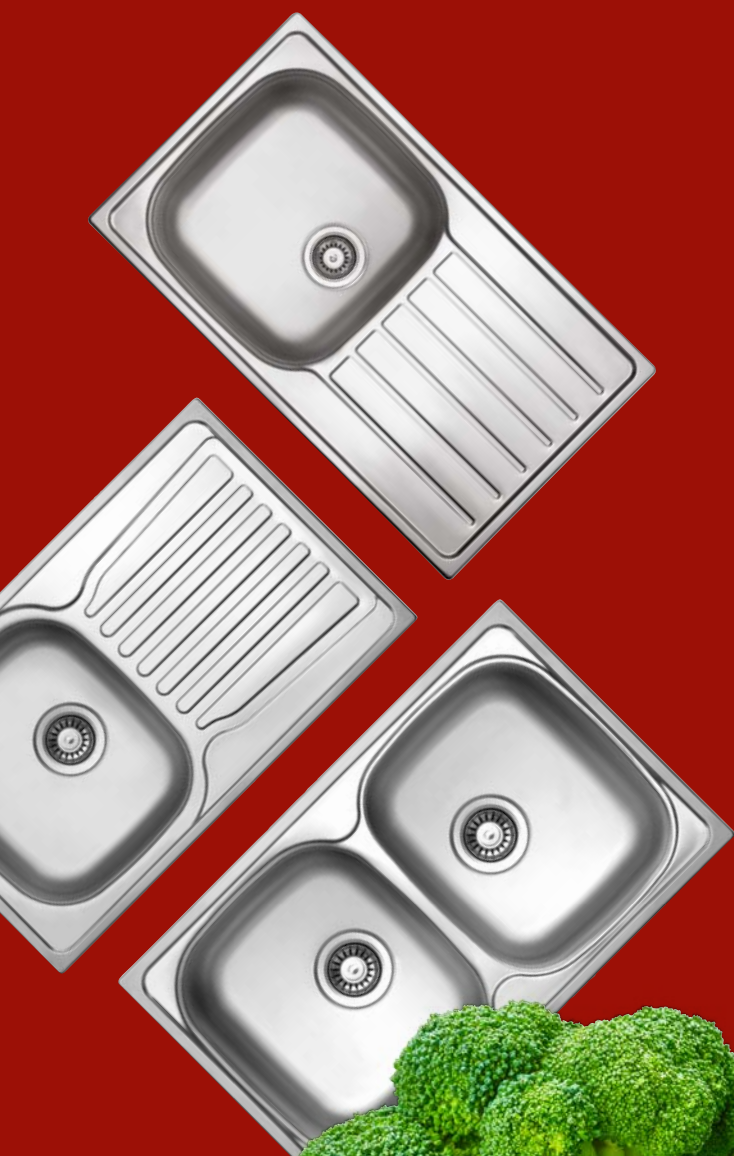
Stainless Steel Kitchen Sinks

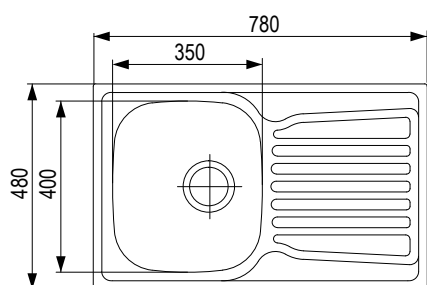


Mohan

502486 | Stainless steel satin, inset installation

- dimensions: 860 × 500 mm
- cut-out: 842 × 482 mm
- basin: 410 × 410 mm
- sink depth: 170 mm
- sheet thickness: 0.6 mm

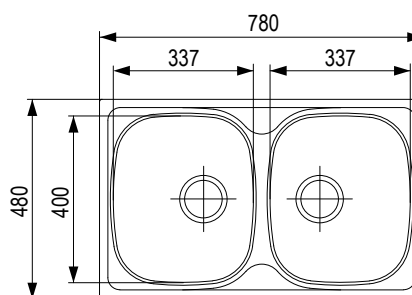




Nisa

505998 | Stainless steel satin, inset installation

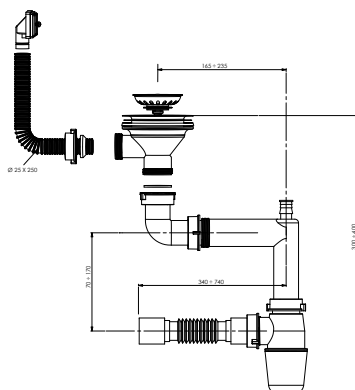
- dimensions: 780 × 480 mm
- cut-out: 762 × 462 mm
- basin: 350 × 400 mm
- sink depth: 180 mm
- sheet thickness: 0.7 mm



Welland

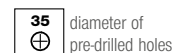
506000 | Double, stainless steel satin, inset installation

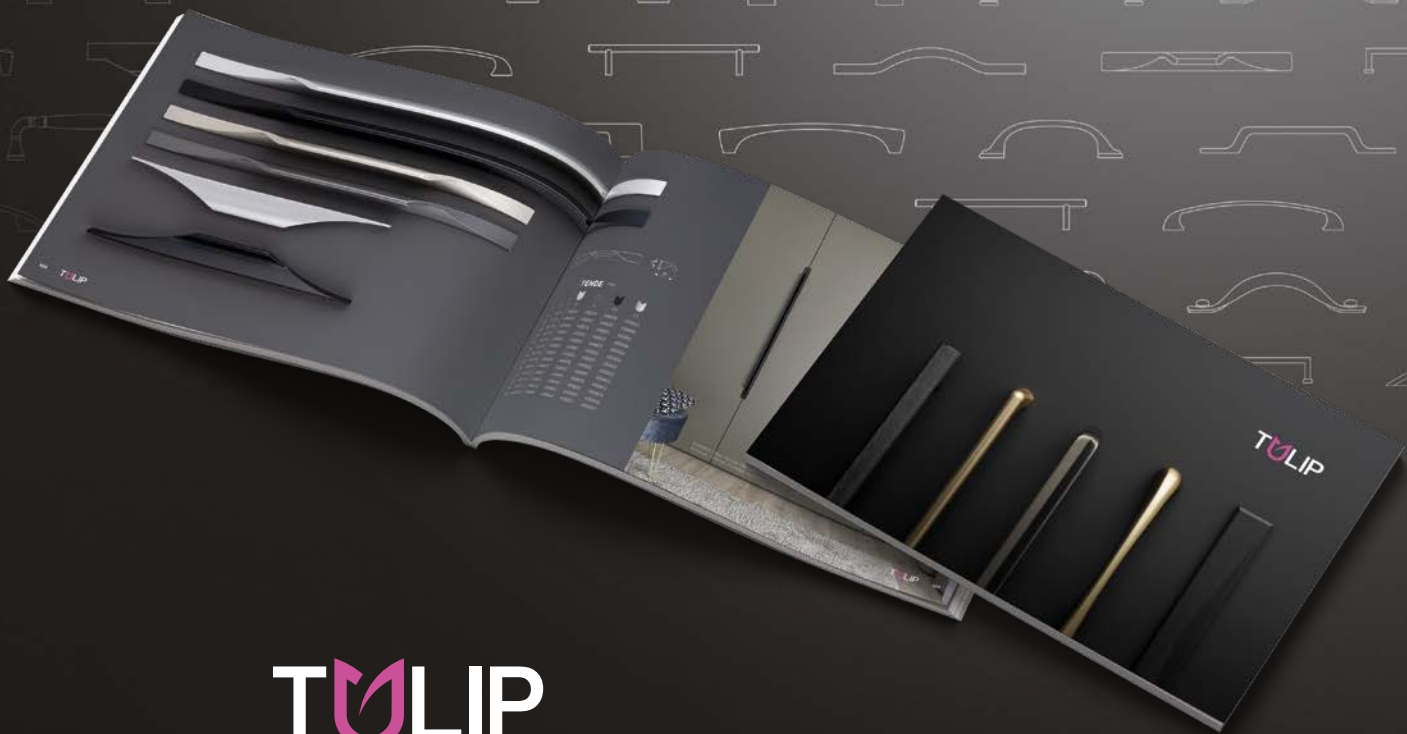
- dimensions: 780 × 480 mm
- cut-out: 762 × 462 mm
- basin: 2x 337 × 400 mm
- sink depth: 175 mm
- thickness: 0.7 mm



482705 | Space saving siphon for stainless steel kitchen sinks

Explanatory notes





TULIP
QUALITY
to touch

**INSIDE A NEW
CATALOGUE 2023**

135

StrongLumio

lighting for
all furniture



www.demos24plus.com

Demos trade, a.s., Škrobálkova 630/13, 718 00 Ostrava-Kunčičky
Customer service centre: T +420 556 684 310 E export@demo-trade.com