

3



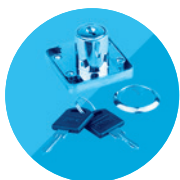
locks

3



Strong locks	3.3–3.8
Lehmann locks	3.9–3.46
Lehmann removable inserts and keys	3.31–3.32
Other Lehmann locks	3.33
Lehmann coin locks	3.34
Locks with mechanic numerical code	3.35–3.42
Lehmann electronic locks	3.43–3.46
Other locks and accessories	3.47–3.48





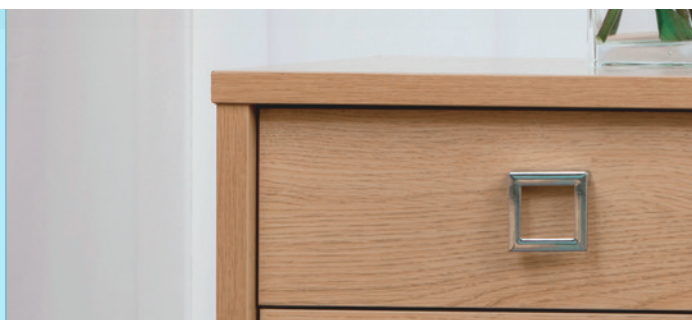
LOCKS

Strong locks



Strong locks

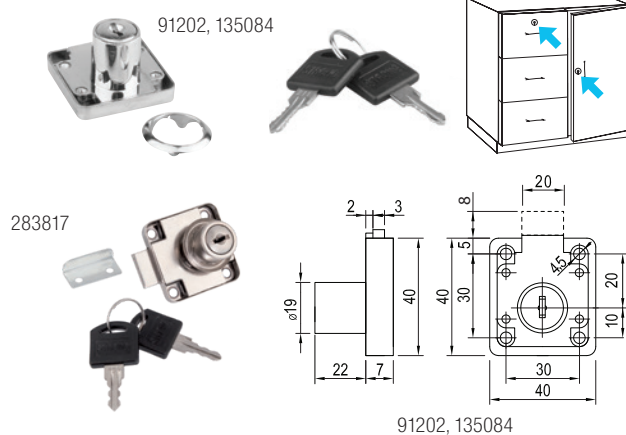
- offering basic types of locks in stock
- cylinder insert is integrated in the lock
- without a master key system



Drawer lock

code	description
91202	chrome
135084	chrome – always the same key
283817	sheet metal

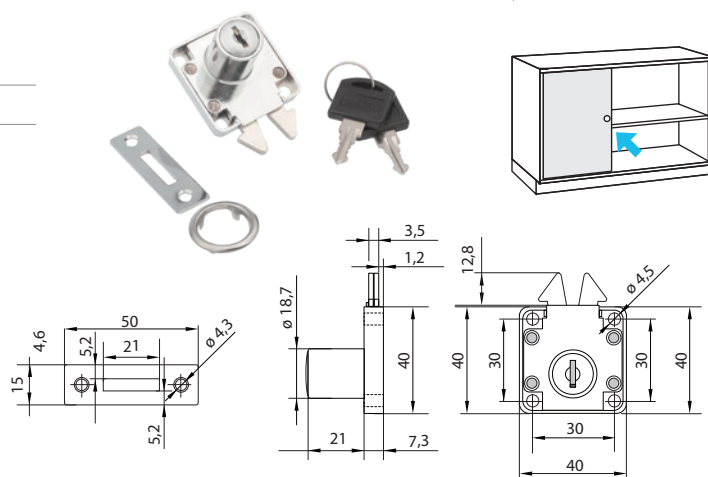
- includes: 1 pc of lock, 2 pcs of keys and 1 pc of rosette
- it is necessary to purchase a counterpart for the body (e.g. 134636), p. 3.47



N Sliding door lock

code	description
303336	chrome

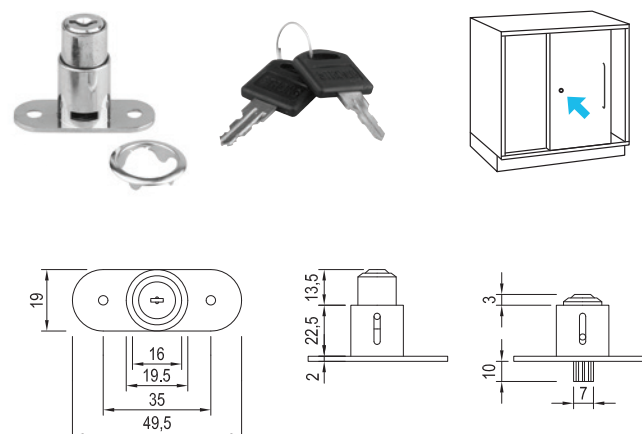
- includes: 1 pc of lock, 1 pc of mortise counterpart, 1 pc of rosette and 2 pcs of keys



Bayonet lock

code	description
91216	chrome

- includes: 1 pc of lock, 1 pc of rosette, 2 pcs of keys

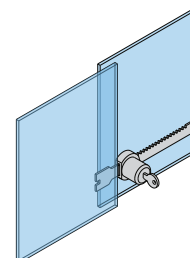
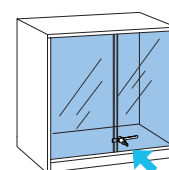
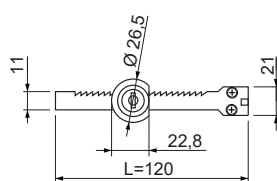
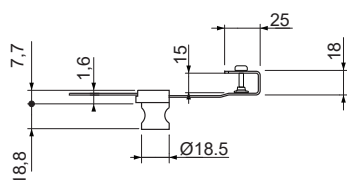




Sliding glass lock

code	description
284906	chrome

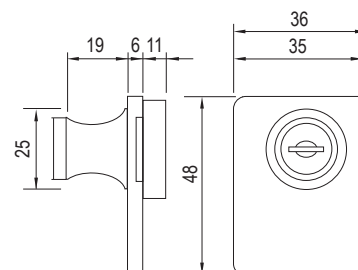
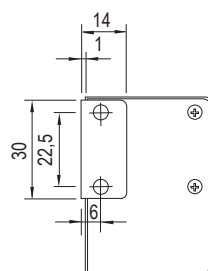
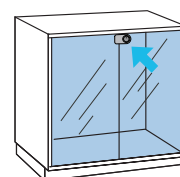
- includes: 1 pc of lock, 1 pc of attachable spike, 2 pcs of keys, 2 screws for attaching to glass

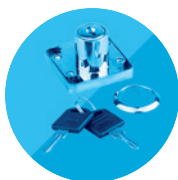


Lock for two glasses

code	description
92167	chrome

- includes: lock, 2 pcs of M4 screws, 1 pc of plastic underlay, 1 pc of counterpart into the body, 2 pcs of keys
- for glass thickness 4-8 mm





LOCKS

Strong locks

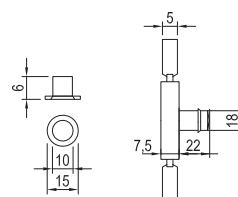
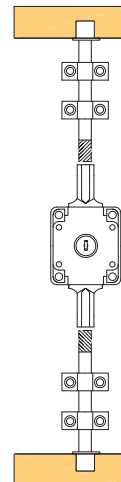
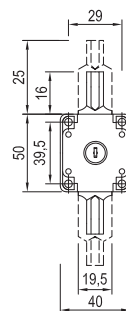
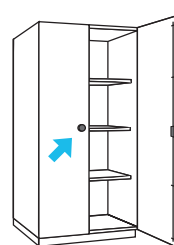


Shooting bar lock

code	description
91209	chrome

- includes: 1 pc of lock, 1 pc of rosette, 2 pcs of bars 1,000 mm, 4 pcs of bar fasteners, 2 pcs of counterparts for the body, 2 pcs of keys

❗ possible to purchase a backstop (p. 7.57) or another counterpart preventing the opening of the second leaf



ACCESSORIES

Bar

284872	1200 mm
---------------	---------

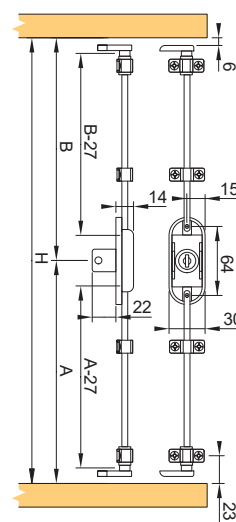
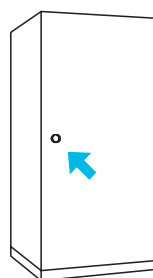
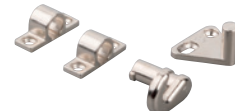
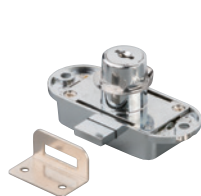
- to replace the bar 1,000 mm in the set 91209



Three-point lock

code	description
362922	chrome

- includes: 1 pc of lock, 1 pc of rosette, 2 pcs of bars 1,000 mm, 2 pcs of bar fasteners, 2 pcs of end bar fasteners, 2 pcs of hooks, 2 pcs of pins into the body, 1 pc of counterpart into the body, 2 pcs of keys



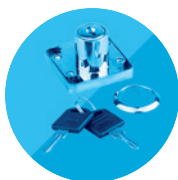
ACCESSORIES

Bar

284871	1200 mm
---------------	---------

- to replace the bar 1,000 mm in the set 362922





Strong chip lock

- easy switching between modes:
 - manual – the lock is locked by attaching the card
 - automatic – the lock is locked automatically after 6 seconds
- packaging: 1 pc of programming card, 2 pcs of user cards, 1 pc of lock, 1 pc of counterpart

code	description
351115	chip electronic lock
351116	chip

- simple and quick installation
- programmable without the need to disassembly the lock
- power supply: 3 pcs of AA batteries (not included in the packaging)
- tested battery life for min. 10,000 openings (depending on used batteries)
- integrated antenna in the body of the lock
- optimal for boards with thickness up to 20 mm



Indication of low voltage in batteries

- when the card is attached to the lock, a long beep sound follows
- when the battery voltage is low, a long beep sound follows after the card is attached to the lock
- we recommend replacing batteries at shorter intervals

Manual

First use of the lock

- press the B button on the lock (beep sound + blue LED flashes)
- attach the programming card to the lock (beep sound + blue LED lights up)

Set or delete a user card

- attach the programming card to the lock (2× beep sound + blue LED flashes)
- attach the user card (short beep sound)

Delete all user cards

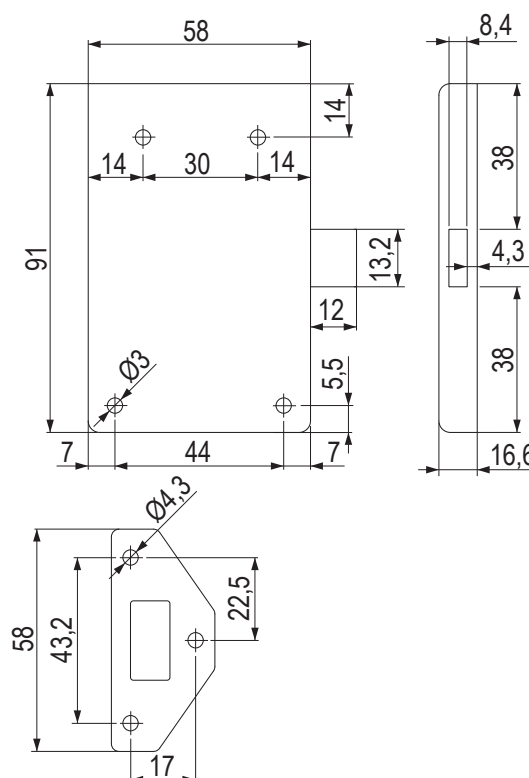
- attach the programming card to the lock 3× (3× beep sound + red LED flashes)

Using the lock

- unlocking and locking the lock is done by attaching the user card (depending on the selected mode)
- tip: the programming card can be used for multiple locks (also functions as a master key)

Warning

- always test the lock on an open door
- we recommend using only alkaline batteries
- voltage input cannot be greater than 6 V
- install the locks min. 20 cm apart
- usable at temperatures of 0-40°C and humidity of 20-80%

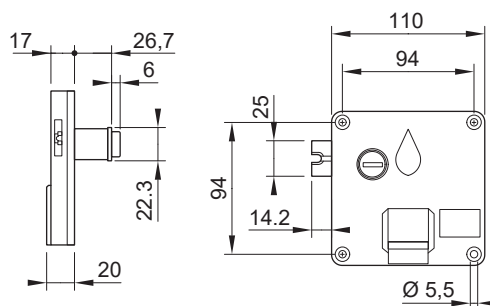
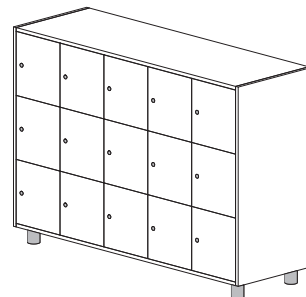




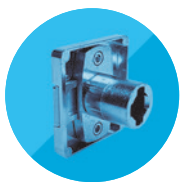
Coin lock

code	description
290283	right (5 CZK, 1 €, 1 Zł, 100 HUF)
285184	master key for coin lock

- up to 700 different key combinations
- only the right option
- package includes: 1× lock, 2× key, 1× coin trap
- for the left option, or the option for environments with increased humidity, see p. 3.34



Illustrative photo



LOCKS

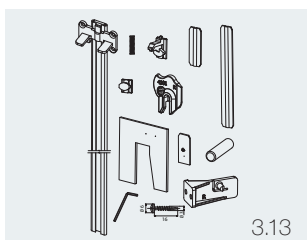
Lehmann locks

LEHMANN®

Lehmann locks — overview



3.11



3.13



3.15



3.17



3.18



3.19



3.21



3.23



3.24



3.25



3.27



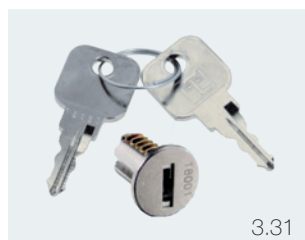
3.28



3.29



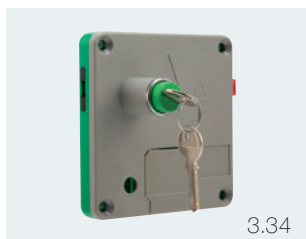
3.30



3.31



3.33



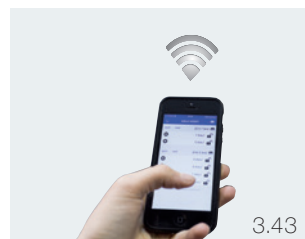
3.34



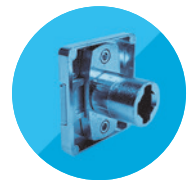
3.35



3.45



3.43

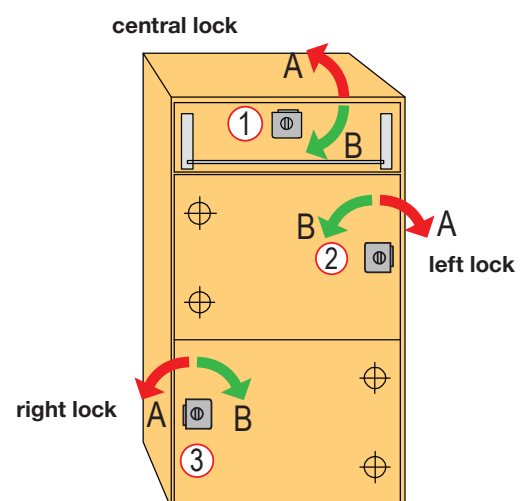
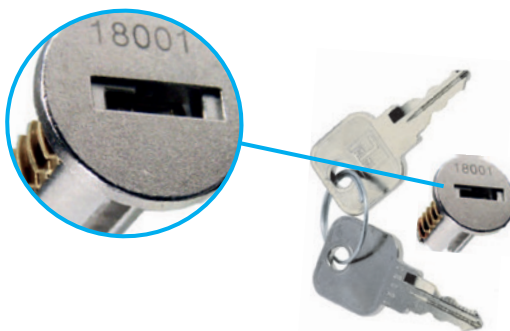


Main advantages of the Lehmann locks

- high quality workmanship
- **made in Germany**
- usual production time of items not in stock 3-4 weeks
- a wide range of locks including special solutions

Removable inserts

- we offer 1,000 different key combinations, **more on demand**
- the option of assembling groups of locks with the same key
- master key system



Example of lock orientation:

- 1 - central lock
- 2 - left lock
- 3 - right lock
- A - locking
- B - unlocking



LOCKS

Lehmann locks

LEHMANN®

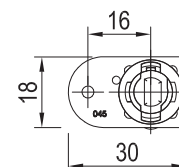
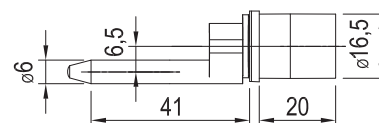
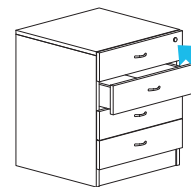
Central container lock 421

code	orientation	cylinder length (mm)	material
L00010	right	20	nickel

A complete set must include:

- rosette 16.5 mm, 1 pc
- bar according to the length, 1 pc
- bar guide, 2 pcs
- pin for the bar (depending on the number of drawers), 1-? pcs
- counterpart (depending on the number and type of drawers), 1-? pcs
- bar lock + pin 17 mm + distance (for option with blocking the opening of more than one drawer)
- removable insert, 1 pc
- for BBP containers, another lock type (L00087 or 122965) must be used in combination with the SVS3 bar – see p. 11.6

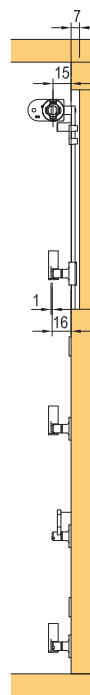
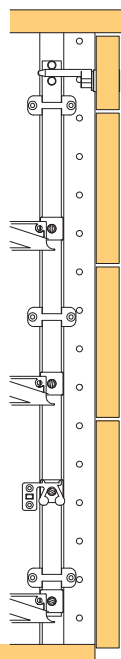
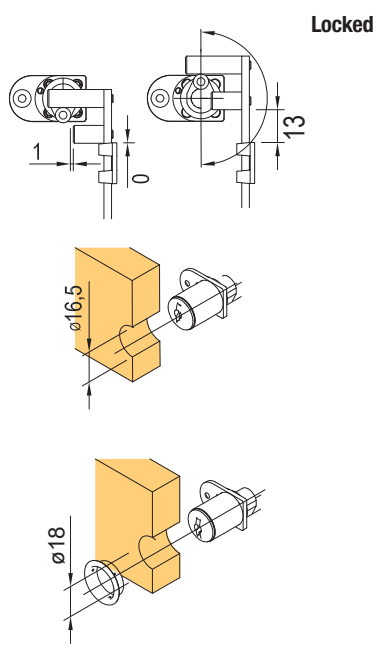
complete solution for containers
including locks from p. 11.3



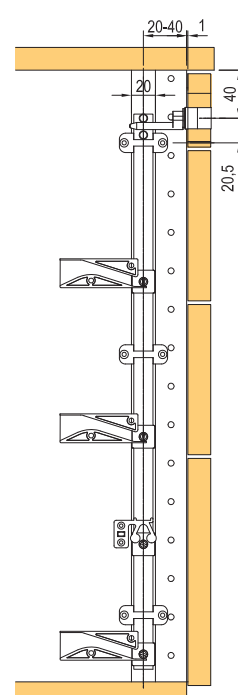
Lock for 4 drawers (set)

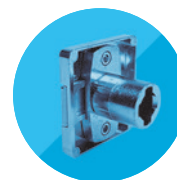
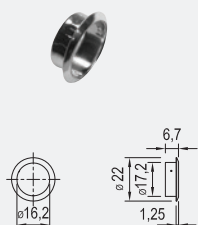
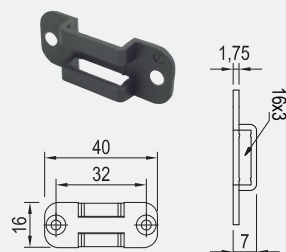
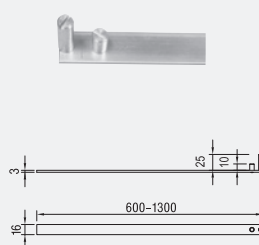
code	description
136178	set for containers with 4 drawers

- includes 1 pc of lock, 1 pc of rosette, 1 pc of bar 600 mm, 2 pcs of guides, 4 pcs of pins 8 mm necessary to supply with a counterpart for the drawer and removable insert as required

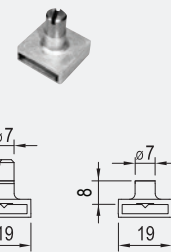


Unlocked




ACCESSORIES

Rosette 16.5 mm
L00066 | nickel

Bar guide
L00014 | black plastic

Bar

L00011	steel, length 600 mm
L00012	steel, length 800 mm
L00013	steel, length 1,300 mm


Pins for the bar

L00018	height 17 mm, nickel
L00025	height 8 mm, nickel

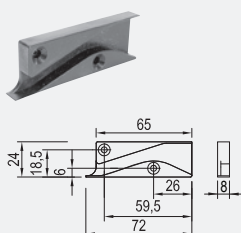
- the packaging includes a separate pin and a screw (they do not have to be assembled)
- the pin L00025 is most commonly used to block individual drawers
- the pin L00018 is used to block the opening of more than one drawer (in combination with L00015 and L00016)

Removable insert

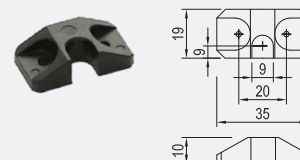
p. 3.31


Counterpart
L00017 | black plastic

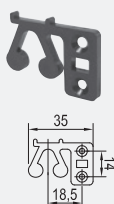
- cannot be used for Metabox
- with safety latch to prevent opening of more than one drawer


Central lock counterpart
11248 | plastic

- mounting on the side of the drawer
- central lock pin slides into the groove
- primarily designed for wooden drawers


Bar lock in upper position
L00015 | black plastic

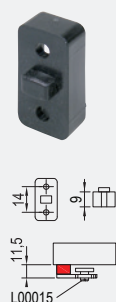
- ensures that the bar is secured in upper position, in case of blocking the opening of more than one drawer


Central lock counterpart
13408 | plastic

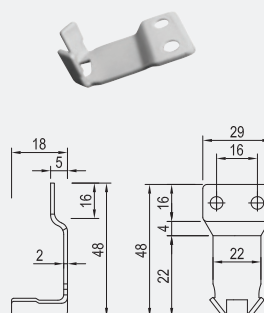
- for roller bearing slides with a side (Metabox)
- for locking and blocking the opening of more than one drawer
- mounting on the bottom of the drawer

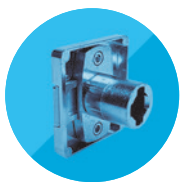

Distance for bar lock
L00016 | black plastic

- for offsetting the bar lock from the body so that the pin holders do not hit it in case of blocking the opening of more than one drawer


Central lock counterpart
11299 | varnished metal

- for roller bearing slides with a side (Metabox)
- only for locking
- mounting on the bottom of the drawer





LOCKS

Lehmann locks

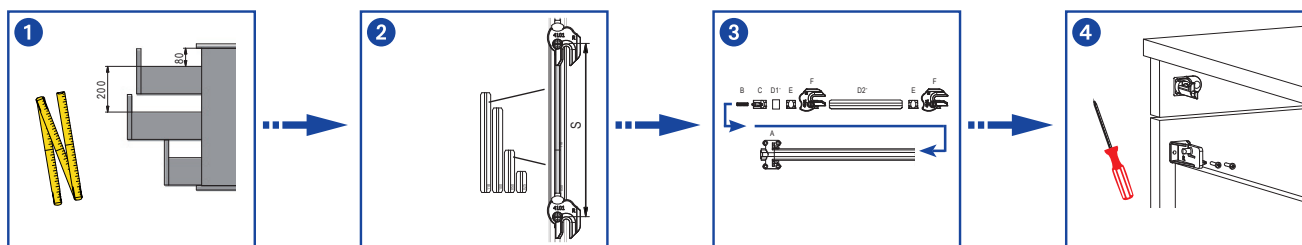
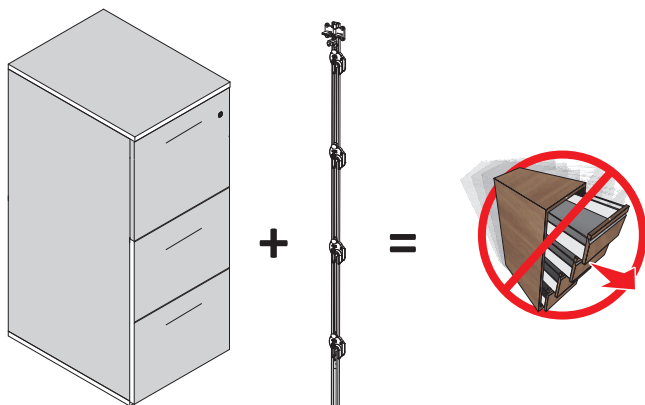
Central locking of drawers

The manufacturer of Lehmann locks extended the central locking of office containers to other drawer types by introducing the SVS3 universal set system. This type of locking is suitable for any type of slide, including slides with double side, ball bearing, roller bearing slides, etc.

- a universal solution for locking any set of pull-out drawers
- the set includes a solution for locking up to 5 drawers for an inner height of the body of up to 1,000 mm
- blocking the opening of more than one drawer = overturn protection
- system ready for 32 mm grid (individually adjustable)

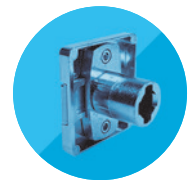


Installation



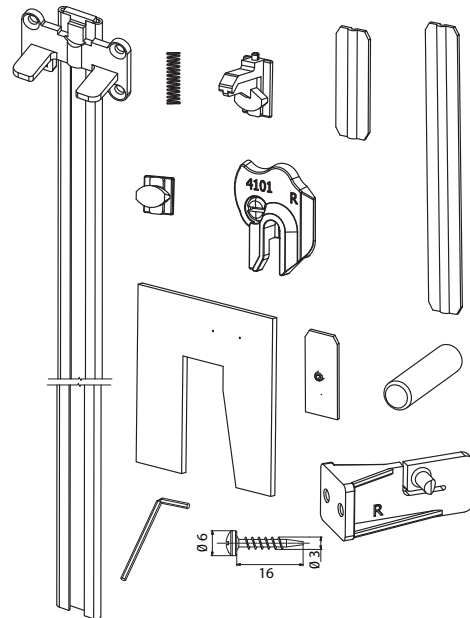
1. preparation – defining basic dimensions
2. selection – selecting individual parts according to the instructions
3. attachment – attaching the SVS3 central locking bar
4. assembling – installation of the central bar and the counterpart to each drawer

- detailed installation manual is included in the packaging or available for download at www.demos24plus.com



code	description
353589	SVS3 universal packet

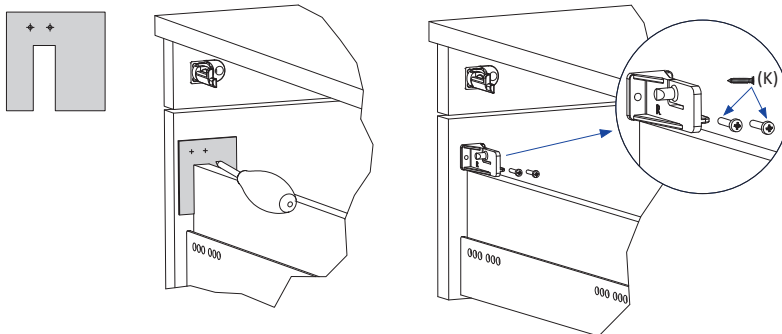
- universal solution for any drawer
 - Strongbox, Antaro, Intivo, InnoTech, etc.
 - for ball and roller bearing slides
 - for wooden drawers with hidden slides
- the bar must be milled-in
- the counterpart is installed on the inner side of the front above the side
- the packaging includes templates for basic types of slides with a double side
- the set must be completed with:
 - lock L00087
 - rosette L00066
 - cylinder insert – see p. 3.31



Installation of the blocking pin

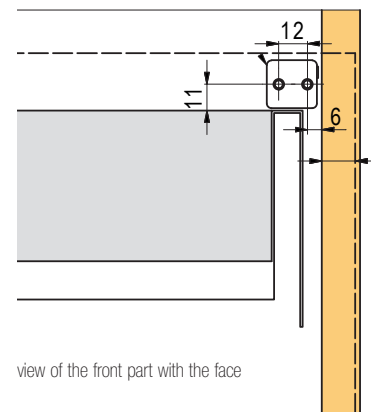
Align all the faces and install the blocking pins.

1. select the template appropriate for the drawer type
2. mark the position for screwing the blocking pins
3. fasten the blocking pins with screws



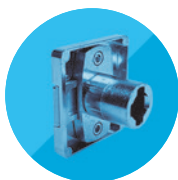
Without a template

Mark the blocking pin according to the picture



code	description
353593	SVS3 packet for BBP containers with a pen tray
353595	SVS3 packet for BBP containers without a pen tray

- universal solution for BBP containers (see Chapter 11)
- the central locking bar does not have to be milled-in
- other parts of the BBP container remain the same
- the SVS3 packet replaces the central SVS3 bar offered in individual BBP sets
- the set must be completed with:
 - lock L00087 or 122965 (for solutions without a pen tray)
 - rosette L00066
 - cylinder insert – see p. 3.31



LOCKS

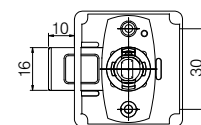
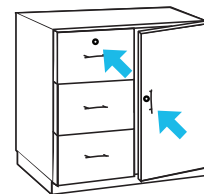
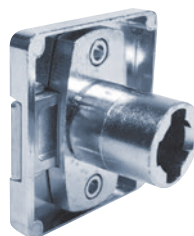
Lehmann locks

LEHMANN®

Drawer lock 391

code	orientation	cylinder length (mm)	material
L00001	right	20	nickel
L00002	left		
L00003	central		
L00004	right	32	
L00005	left		
L00006	central		

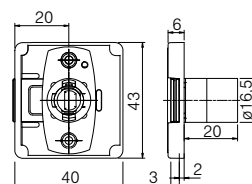
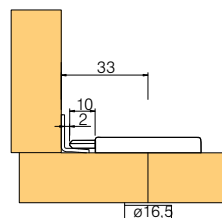
☞ determining the orientation of the locks – p. 3.10



Drawer lock 391 with key block

code	orientation	cylinder length (mm)	material
L00049	right	20	nickel

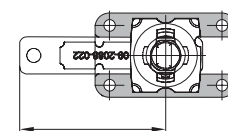
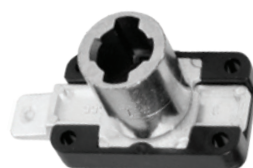
- if the key is lost, the insert cannot be removed and the whole lock must be replaced



Lock 430 for SVS bar

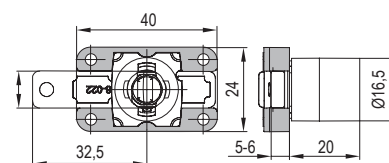
code	orientation	cylinder length (mm)	material
122965	right	20	nickel/plastic

- primarily designed for locking of SVS bar, can be also used as a drawer lock

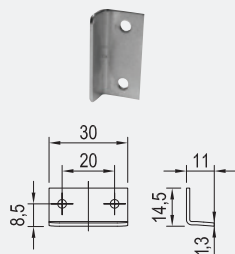


A complete set must include:

- drawer lock 391 or 430, 1 pc
- rosette 16.5 mm, 1 pc
- angled striking plate, 1 pc
- removable insert, 1 pc

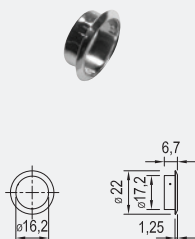


ACCESSORIES



Angled striking plate 30 mm

L00007	nickel, counterpart for screwing
---------------	----------------------------------



Rosette 16.5 mm

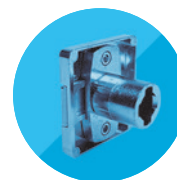
L00066	nickel
---------------	--------



Removable insert

p. 3.31

☞ more angled striking plates and counterparts on p. 3.47

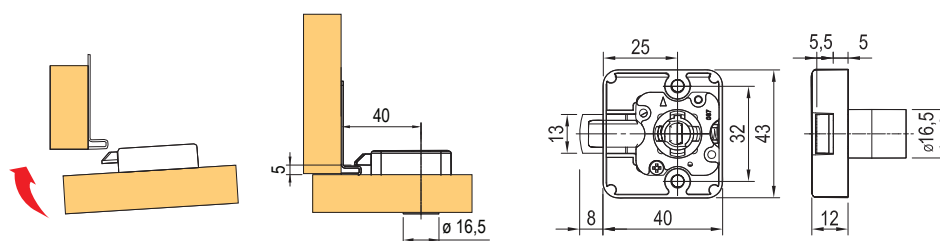
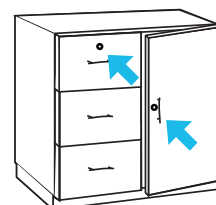
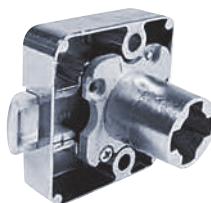


Lock 584 with latch

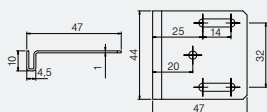
code	orientation	material
135579	right-left	nickel

A complete set must include:

- lock 584, 1 pc
- rosette 16.5 mm, 1 pc
- angled striking plate or counterpart for the lock, 1 pc
- removable insert, 1 pc

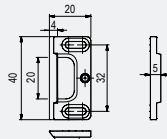


ACCESSORIES



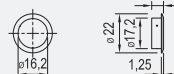
Angled striking plate 44 mm

L00008 nickel



Counterpart for the lock

L00091 counterpart for the lock




Rosette 16.5 mm

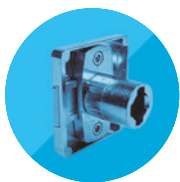
L00066 nickel



Removable insert

p. 3.31

 more angled striking plates on p. 3.47



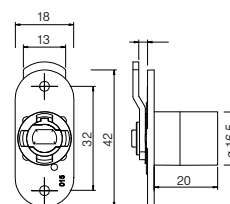
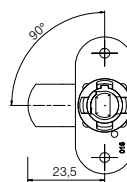
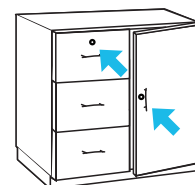
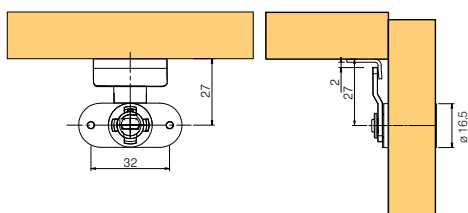
LOCKS

Lehmann locks

LEHMANN®

Cabinet lock 371

code	orientation	cylinder length (mm)	material
L00055	right	20	nickel



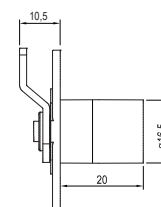
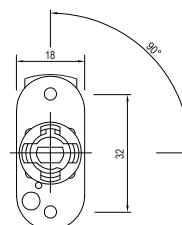
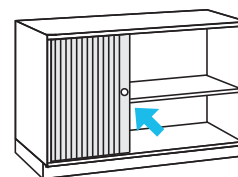
Cabinet lock 372.02

code	orientation	cylinder length (mm)	material
224510	left	20	nickel

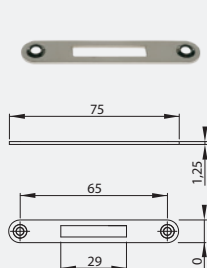
- can be used in the Metallic-Line shutter combi end profile R92836 or R92837, see Chapter 12 Furniture shutters

A complete set must include:

- cabinet lock 371 or 372.02, 1 pc
- rosette 16.5 mm, 1 pc
- counterpart, 1 pc
- removable insert, 1 pc

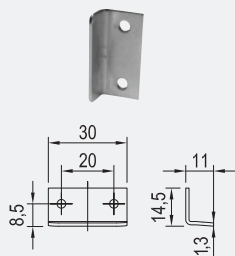


ACCESSORIES



Mortise counterpart

223468	nickel, length 75 mm
---------------	----------------------



Angled striking plate 30 mm

L00007	nickel
---------------	--------



Rosette 16.5 mm

L00066	nickel
---------------	--------



Removable insert

p. 3.31

- more angled striking plates on p. 3.47

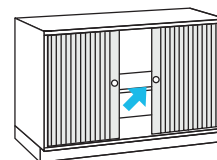


Shutter lock 416

code	orientation	cylinder length (mm)	material
L00060	right	20	nickel

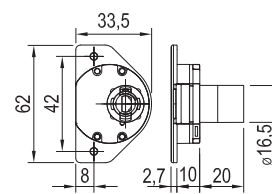
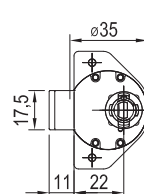
- suitable for locking furniture shutters on the end profile 47 × 25 mm

for locking Metallic-Line shutters, lock 372.02 (code 224510) can be used, p. 3.17

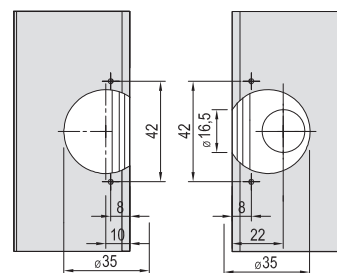
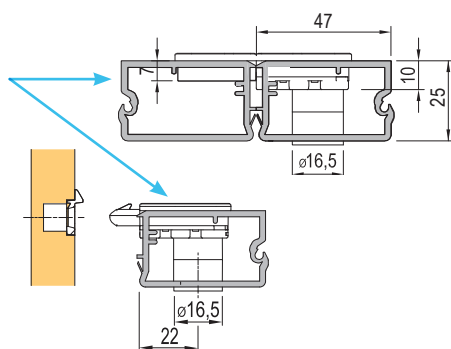


A complete set must include:

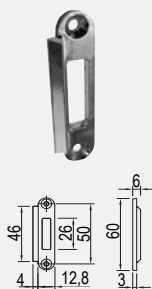
- shutter lock 416, 1 pc
- rosette 16.5 mm, 1 pc
- counterpart for one shutter (depending on the usage), 0-1 pc
- counterpart for two shutters (depending on the usage), 0-1 pc
- removable insert, 1 pc



End profile 47 × 25 mm for Rehau furniture shutters

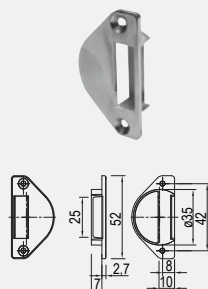


ACCESSORIES



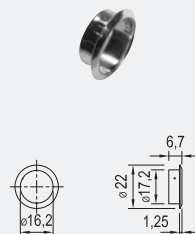
Counterpart for one shutter

L00061	nickel
---------------	--------



Counter part for two shutters

L00062	nickel
---------------	--------



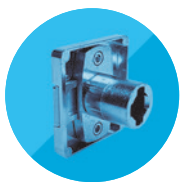
Rosette 16.5 mm

L00066	nickel
---------------	--------



Removable insert

p. 3.31



LOCKS

Lehmann locks

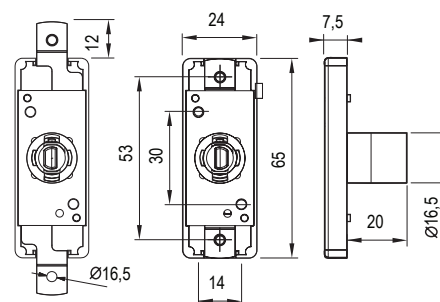
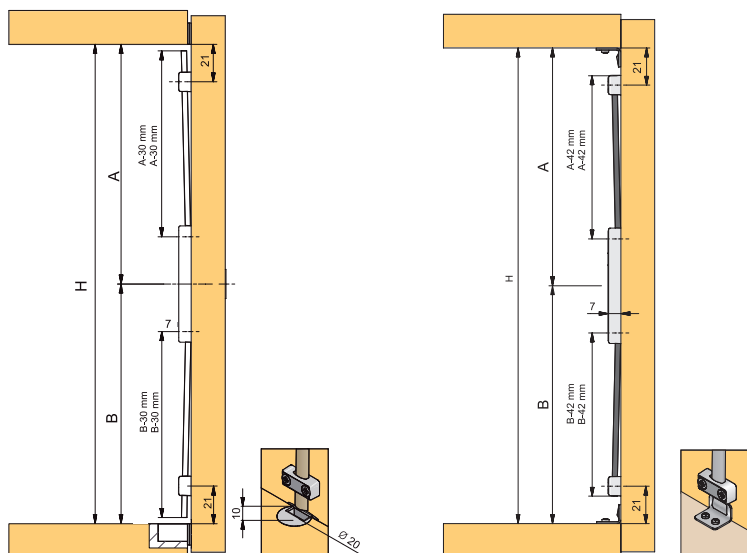
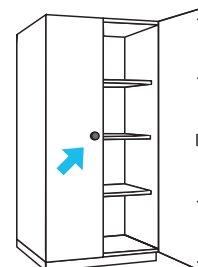
LEHMANN®

Shooting bar lock 292

code	orientation	cylinder length (mm)	material
L00028	right	20	nickel

A complete set must include:

- shooting bar lock 292, 1 pc
- rosette 16.5 mm, 1 pc
- shooting bar, 2 pcs
- possible to purchase a backstop (p. 7.57) or another counterpart preventing the opening of the second leaf
- shooting bar guide, min. 2 pcs
- counterpart for shooting bar (depending on the attachment, see accessories), 2 pcs
- angled striking plate (depending on the attachment, see accessories), 2 pcs
- removable insert, 1 pc

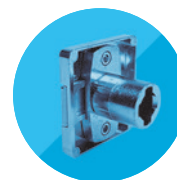


Shooting bar lock 292 (set)

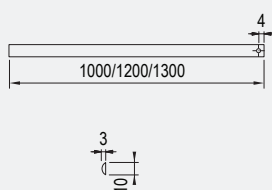
136175	set 1,000 mm
136200	set 1,200 mm

- includes: 1 pc of lock, 1 pc of rosette, 2 pcs of bars, 2 pcs of guides, 2 pcs of angled striking plates

⚠ A removable insert must be supplied as required.

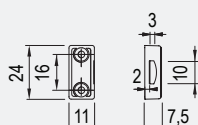


Accessories



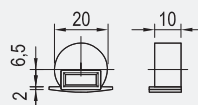
Shooting bar

L00029	nickel, length 1,000 mm
L00030	nickel, length 1,200 mm
220366	nickel, length 1,300 mm



Shooting bar guide

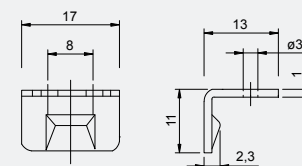
L00031	nickel
---------------	--------



Shooting bar counterpart

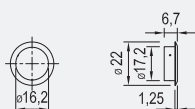
L00032	nickel
---------------	--------

- counterpart for drilling



Counterpart

L00065	striking plate for a bolt
---------------	---------------------------



Rosette 16.5 mm

L00066	nickel
---------------	--------

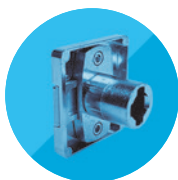


Removable insert

p. 3.31



Locking a two-leaf cabinet:
Equip the first leaf with a shooting bar lock.
Fix a backstop on the other leaf (p. 7.57) so
it overlaps the edge.
By locking one leaf, the other leaf is blocked
by the first leaf with the backstop.



LOCKS

Lehmann locks

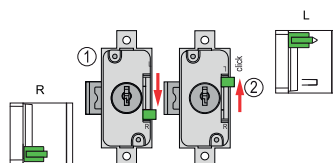
LEHMANN®

Three-point lock 750

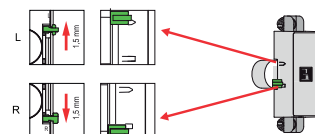
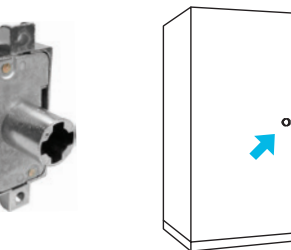
code	orientation	cylinder length (mm)	option (mm)	material
L00033	right-left (switchable)	20	15	nickel
349440	right-left (switchable)		25	

A complete set must include:

- three-point lock 750, 1 pc
- rosette 16.5 mm, 1 pc
- bar, 2 pcs
- angled striking plate, 1 pc
- upper hook, 1 pc
- lower hook, 1 pc
- guide for bar, min. 2 pcs
- pin, 2 pcs
- removable insert, 1 pc



switching the locking direction



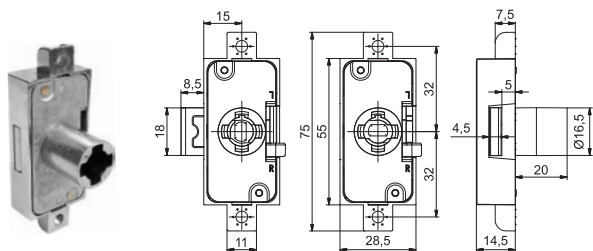
activation of key blocking (the key cannot be pulled out while the lock is unlocked)

Lock 750.15 with bars (set)

code	description
136176	set 1,000 mm
136177	set 1,200 mm

- includes: 1 pc of lock, 1 pc of rosette, 2 pcs of bars, 1 pc of upper hook, 1 pc of lower hook, 2 pcs of guides, 2 pcs of pins

❗ a removable insert and an angled striking plate must be supplied as required

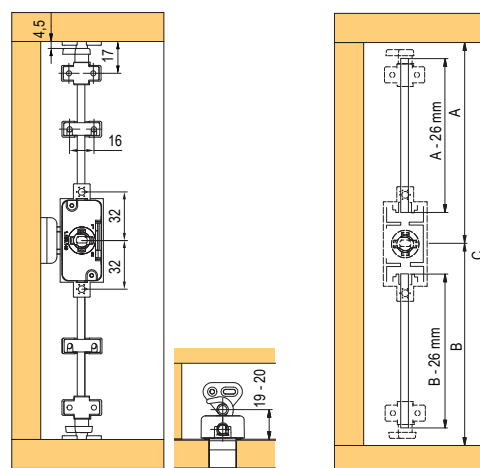
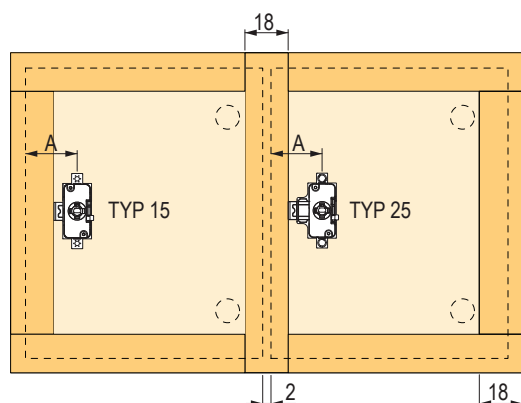
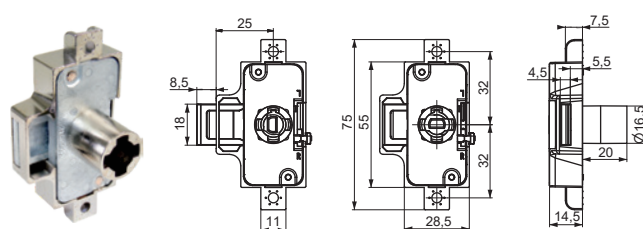


Three-point lock 750.25 mm with bars (set)

code	description
349745	set 1,000 mm
349747	set 1,200 mm

- includes: 1 pc of lock, 1 pc of rosette, 2 pcs of bars, 1 pc of upper hook, 1 pc of lower hook, 2 pcs of guides, 2 pcs of pins

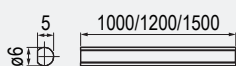
❗ a removable insert and an angled striking plate must be supplied as required



- an example of the use of locks 750.15 and 750.25 (the same distance between the lock and the edge of full overlay and half overlay doors)

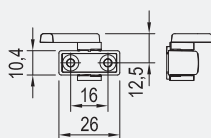


Accessories



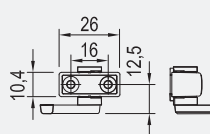
Bar

L00034	nickel, length 1,000 mm
L00035	nickel, length 1,200 mm
L18319	nickel, length 1,500 mm



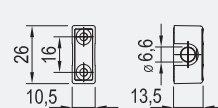
Upper hook

L00036	nickel
---------------	--------



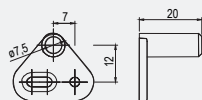
Lower hook

L00037	nickel
---------------	--------



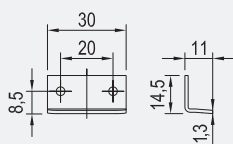
Bar guide

L00038	nickel
---------------	--------



Pin

L00039	nickel
---------------	--------



Angled striking plate 30 mm

L00007	nickel
---------------	--------

- counterpart for screwing
- more angled striking plates on p. 3.47



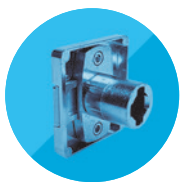
Rosette 16.5 mm

L00066	nickel
---------------	--------



Removable insert

p. 3.31



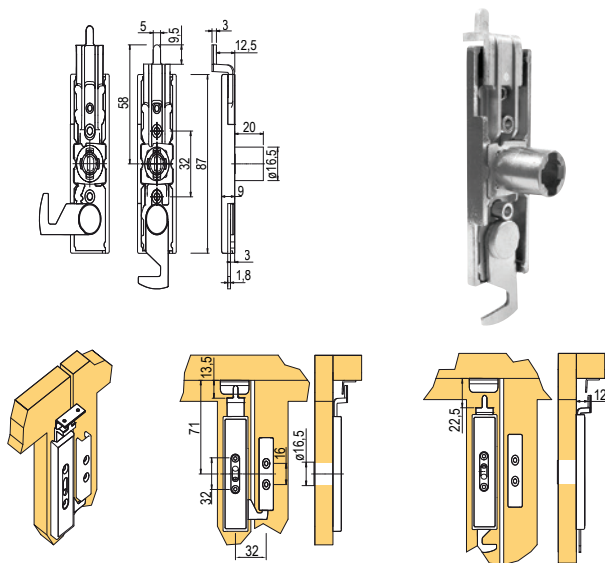
LOCKS

Lehmann locks

LEHMANN®

Cabinet lock 415.01

code	orientation	cylinder length (mm)	material
L00058	right	20	nickel

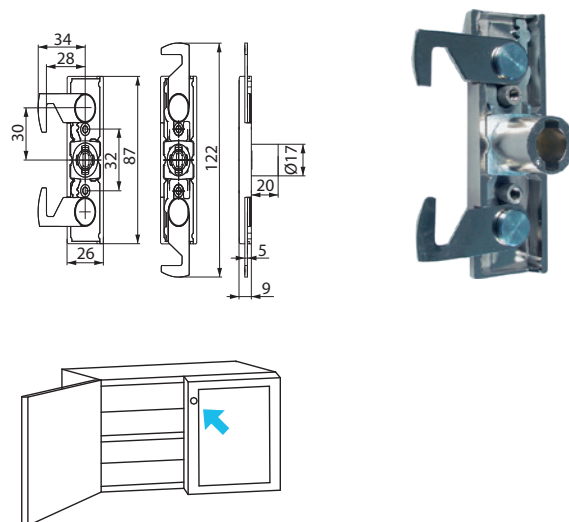


A complete set must include:

- cabinet lock 415, 1 pc
- rosette 16.5 mm, 1 pc
- counterpart, 1 pc
- angled striking plate 30 mm or circular counterpart, 1 pc
- removable insert, 1 pc

Cabinet lock 415 with two hooks

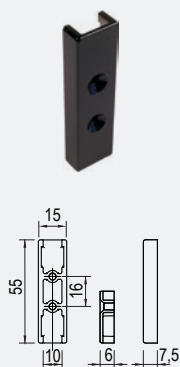
code	orientation	cylinder length (mm)	material
348976	right	20	nickel



A complete set must include:

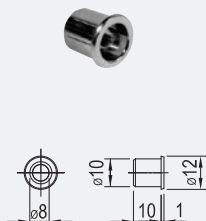
- cabinet lock 415, 1 pc
- rosette 16.5 mm, 1 pc
- counterpart, 1 pc
- removable insert, 1 pc

ACCESSORIES



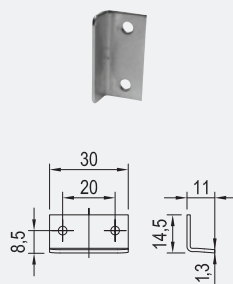
Counterpart

L00059	nickel
---------------	--------



Circular counterpart

L00052	nickel
---------------	--------



Angled striking plate 30 mm

L00007	nickel
---------------	--------

- counterpart for screwing



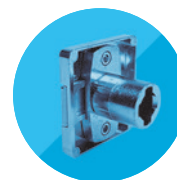
Rosette 16.5 mm

L00066	nickel
---------------	--------



Removable insert

p. 3.31



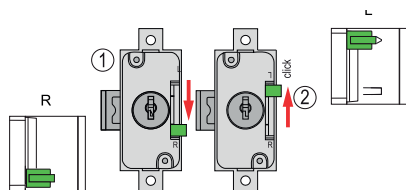
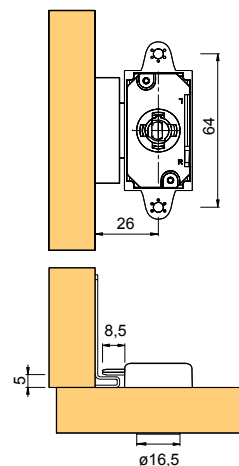
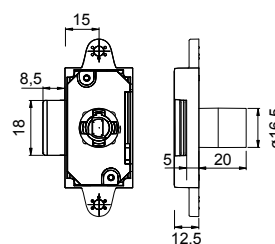
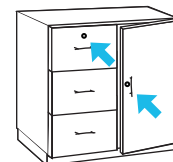
Cabinet lock 550

code	orientation	cylinder length (mm)	material
L00009	right-left (switchable)	20	nickel

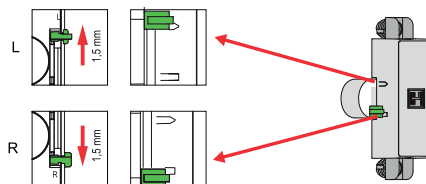
- the option to switch between left and right locking directions with option to activate key blocking

A complete set must include:

- cabinet lock 550, 1 pc
- rosette 16.5 mm, 1 pc
- angled striking plate, 1 pc
- removable insert, 1 pc

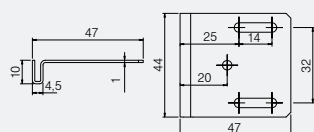


switching the locking direction



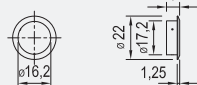
activation of key blocking (the key cannot be pulled out while the lock is unlocked)

ACCESSORIES



Angled striking plate 44 mm

L00008 nickel



Rosette 16.5 mm

L00066 nickel



Removable insert

p. 3.31

[more angled striking plates on p. 3.47](#)



LOCKS

Lehmann locks

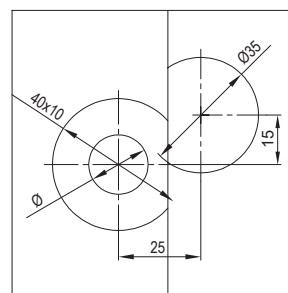
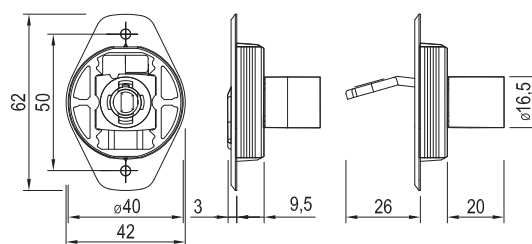
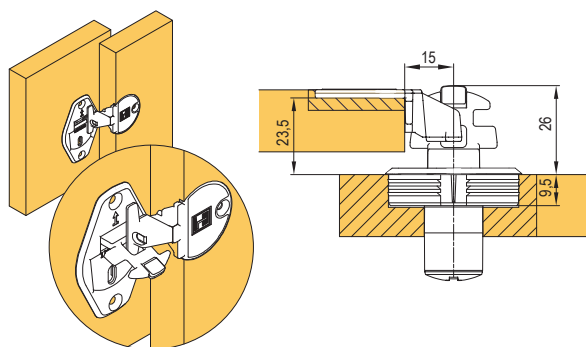
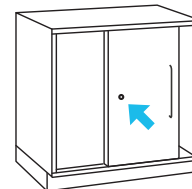
LEHMANN®

Sliding door lock 515.04

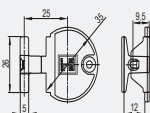
code	orientation	cylinder length (mm)	material
227015	right	20	nickel

A complete set must include:

- sliding door lock 515.04, 1 pc
- rosette 16.5 mm, 1 pc
- counterpart 5155, can be used also without a counterpart (will not be secured against leaf deflection between one another – prying open), 1 pc
- removable insert, 1 pc

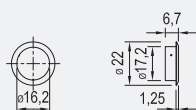


ACCESSORIES



Counterpart 5155

227016 nickel



Rosette 16.5 mm

L00066 nickel



Removable insert

p. 3.31

- for a sliding door lock

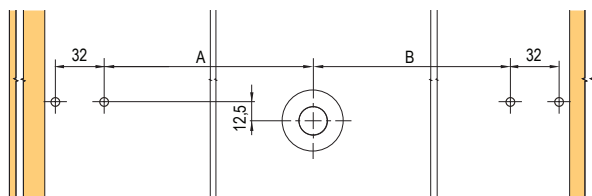
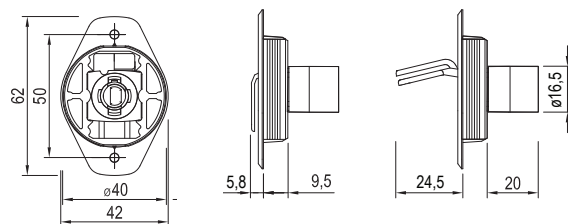
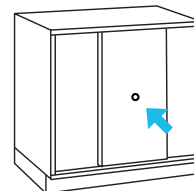
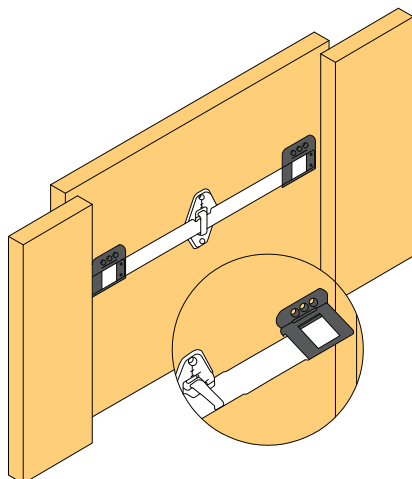


Sliding door lock 515.02

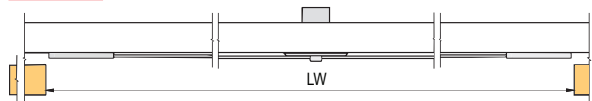
code	orientation	cylinder length (mm)	material
142113	right	20	nickel

A complete set must include:

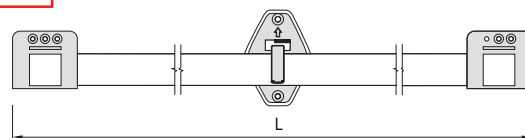
- sliding door lock 515.02, 1 pc
- bar for the lock, length 999 mm, 1 pc
- rosette 16.5 mm, 1 pc
- removable insert, 1 pc



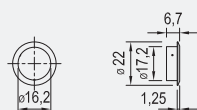
$$\frac{A}{B} = \frac{LW}{2} - 38$$



$$L = LW - 4$$



ACCESSORIES



Bar for the lock

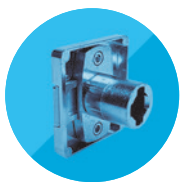
142114	nickel, length 999 mm
---------------	-----------------------

Rosette 16.5 mm

L00066	nickel
---------------	--------

Removable insert

p. 3.31



LOCKS

Lehmann locks

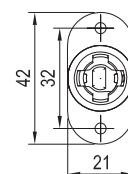
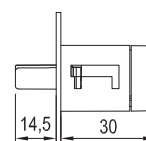
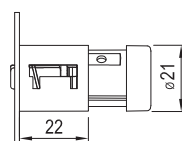
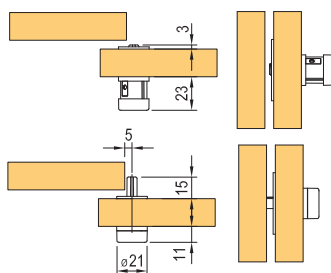
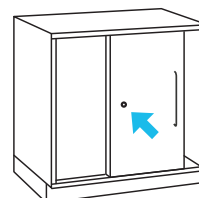
LEHMANN®

Bayonet lock 521

code	orientation	cylinder length (mm)	material
L00048	right	20	nickel

A complete set must include:

- bayonet lock 521, 1 pc
- rosette, 1 pc
- removable insert, 1 pc



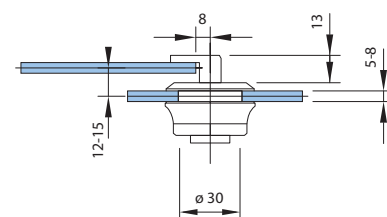
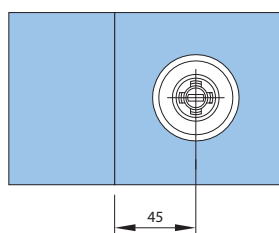
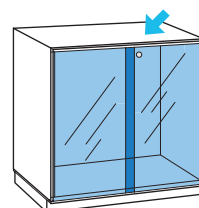
Lock for sliding glass door 326

code	orientation	glass thickness (mm)	material
L00054	right	5 - 8	chrome

• drilling hole diameter in the glass 30 mm

A complete set must include:

- glass door lock 326, 1 pc
- removable insert, 1 pc



ACCESSORIES

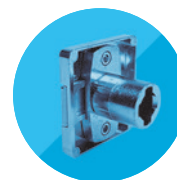


Rosette 21.2 mm

L00079 nickel

Removable insert

p. 3.31



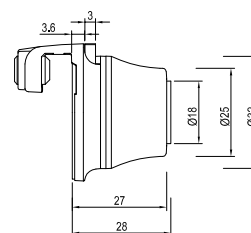
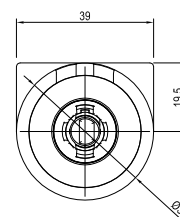
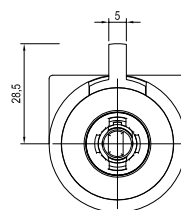
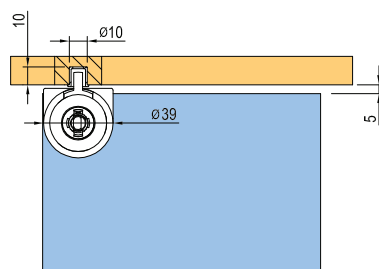
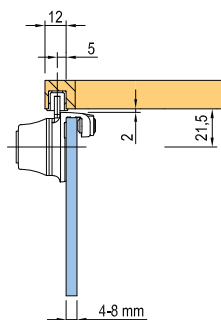
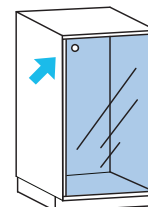
Attachable glass door lock 324

code	orientation	glass thickness (mm)	material
227017	right	4-8	chrome

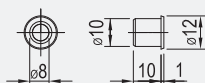
- for inset glass door

A complete set must include:

- glass door lock 324, 1 pc
- circular counterpart, 1 pc
- pin for fixing the glass, 1 pc
- removable insert, 1 pc

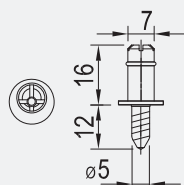


ACCESSORIES



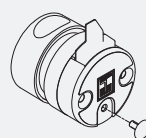
Circular counterpart

L00052 nickel



Pin for fixing the glass

L00053 nickel



Pin for activation of key blocking

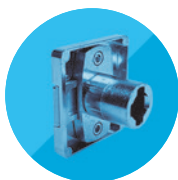
281957 Pin for key blocking of glass door locks

- key blocking is activated by inserting the pin into the lock
- can be used for glass door locks 320, 322 and 324



Removable insert

p. 3.31



LOCKS

Lehmann locks

LEHMANN®

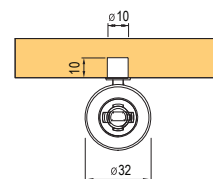
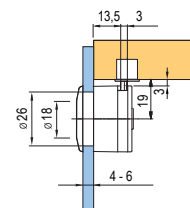
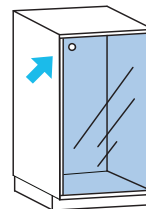
Glass door lock 320 – for one leaf

code	orientation	glass thickness (mm)	material
L00075	right	4-6	chrome

- drilling hole diameter in the glass 26 mm

A complete set must include:

- glass door lock 320, 1 pc
- circular counterpart, 1 pc
- removable insert, 1 pc



Glass door lock 322 – for two leaves

code	orientation	glass thickness (mm)	material
L00050	right	4-6	nickel

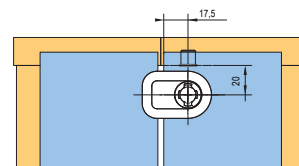
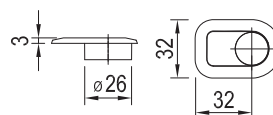
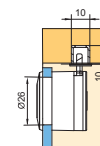
- drilling hole diameter in the glass 26 mm
- ! it is necessary to purchase a counterpart for the other glass L00051

Counterpart for the other glass

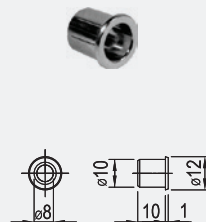
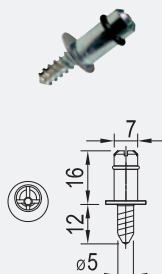
code	material
L00051	nickel

A complete set must include:

- glass door lock 322, 1 pc
- counterpart for other glass, 1 pc
- circular counterpart, 1 pc
- pin for fixing the glass, only for inset doors (functions as a backstop), 1 pc
- removable insert, 1 pc



ACCESSORIES



Pin for activation of key blocking

281957	Pin for key blocking of glass door locks
---------------	--

- key blocking is activated by inserting the pin into the lock
- can be used for glass door locks 320, 322 and 324

Pin for fixing the glass

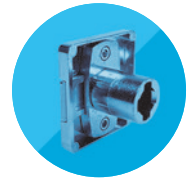
L00053	nickel
---------------	--------

Circular counterpart

L00052	nickel
---------------	--------

Removable insert

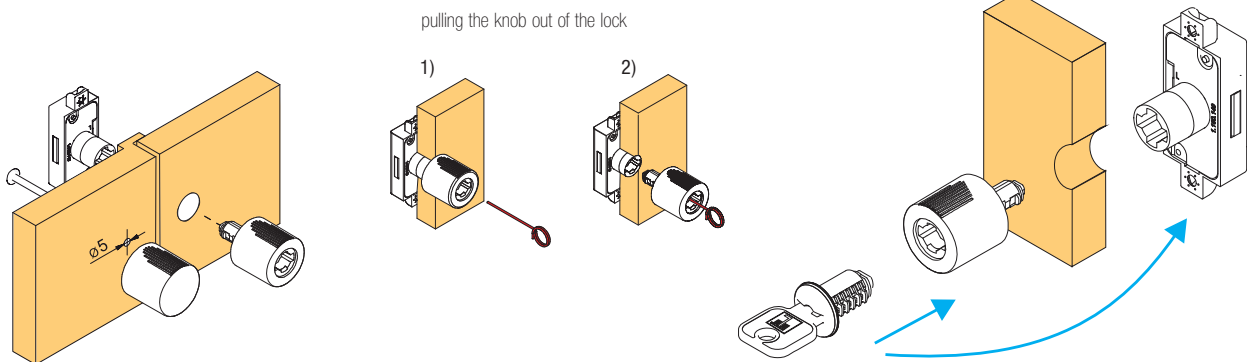
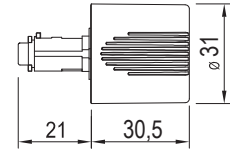
p. 3.31



Lockable knobs

code	orientation	material
136499	right	matt nickel
136500	left	

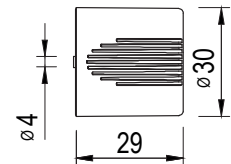
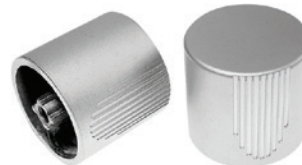
- knob including a hole for removable insert – can be locked
- ❗ removable insert has be purchased separately



Knob imitation

code	description
136502	matt nickel

- handle knob – used as a handle or a design accessory



ACCESSORIES



Knob disassembly tool

L00042	nickel
---------------	--------



Blind cylinder insert

285157	plastic/nickel
---------------	----------------

- when using lockable knob for locking without a key



Removable insert

p. 3.31



Uni removable inserts with two B1 keys for different key combinations

- The below-mentioned codes include only one insert with two keys from the series in description, for example, when you order 5 pcs of 211144, you will receive 5 randomly selected inserts from series 18001-18100.

code	insert number
211144	from series 18001-18100
211145	from series 18101-18200
211146	from series 18201-18300
211147	from series 18301-18400
211148	from series 18401-18500

code	insert number
237703	from series 18501-18600
237704	from series 18601-18700
237705	from series 18701-18800
237706	from series 18801-18900
237707	from series 18901-19000



Individual Uni B1 removable inserts with two B1 keys for the same key combinations

-  the code is only for one combination of insert and keys, e.g. when you order 5 pcs of 211094, you will receive 5 identical inserts with the same keys in the 18001 combination

code	insert number
211094	18001
211095	18002
211096	18003
211097	18004
211098	18005
211099	18006
211100	18007
211101	18008
211102	18009
211103	18010
211104	18011
211105	18012
211106	18013
211107	18014
211108	18015
211109	18016
211110	18017

code	insert number
211111	18018
211112	18019
211113	18020
211114	18021
211115	18022
211116	18023
211117	18024
211118	18025
211119	18026
211120	18027
211121	18028
211122	18029
211123	18030
211124	18031
211125	18032
211126	18033
211127	18034

code	insert number
211128	18035
211129	18036
211130	18037
211131	18038
211132	18039
211133	18040
211134	18041
211135	18042
211136	18043
211137	18044
211138	18045
211139	18046
211140	18047
211141	18048
211142	18049
211143	18050



removable insert



Lehmann removable inserts and keys

3

UNI REMOVABLE INSERTS

with one C1 key (folding) and one B1 key (metal)

code	insert number
211149	from series 18001-18100
211150	from series 18101-18200
211151	from series 18201-18300
211152	from series 18301-18400
211153	from series 18401-18500

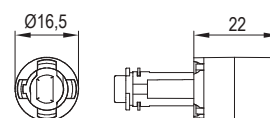
- the above-mentioned codes include only one insert with two keys from the series in description, for example, when you order 5 pcs of 211149, you will receive 5 randomly selected inserts from series 18001-18100



Cylinder extension by 22 mm

code	description
198416	nickel

- serves as a cylinder extension when using locks from materials with greater thickness
- the extension can be used for all common Lehmann locks
- after attaching, the extension cannot be removed
- a required cylinder insert must be used for the extension



Spare key

code	description
252874	for combination 18001

- additional spare keys can be ordered



Raw key

code	description
L00080	for removable inserts with numbers 18001-18500
355799	for removable inserts with numbers 18501-19000

- a semi-finished product which must be milled according to a pattern (of another key)



Master key

code	description
L00068	for removable inserts with numbers 18001-18500
215448	for removable inserts with numbers 18501-19000

- for unlocking all inserts from a given series



Disassembly key

code	description
L00067	for removable inserts from the entire series 18000

- serves for removing the cylinder insert with an opened lock
- this key cannot unlock the lock





LOCKS

other Lehmann locks

LEHMANN®

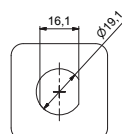
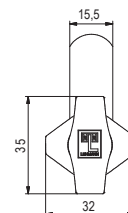
N Latch lock with an additional padlock

code	description
350804	anti-corrosion treatment, nickel surface

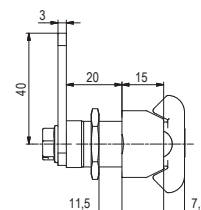
The latch lock with an additional padlock is suitable for sheet metal doors (with adapter also for laminated particle board).

When the shackle is attached, the lock cannot be locked or unlocked.

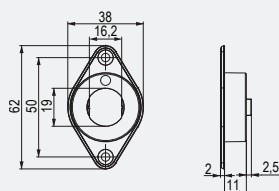
- mounting into material with thickness of 0.7-11 mm
- for material with thickness of 12-14 mm, adapter 309274 and washer 350805 have to be purchased
- for material with thickness of 14-19 mm, adapter 309274 has to be purchased
- suitable for shackles up to 8 mm in diameter
- ❗ the shackle is not included in the packaging



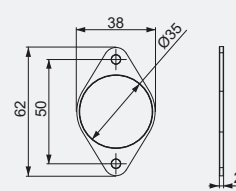
drilling a hole
into a sheet metal door



ACCESSORIES



code	description
309274	adapter for mounting into wood

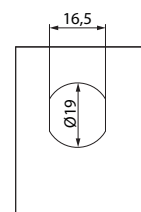
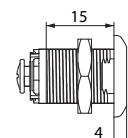
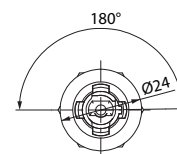


code	description
350805	plastic insert 2 mm

N Sheet metal door lock

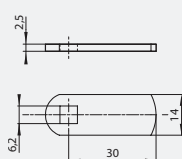
code	description
351469	right

- cylinder length 15 mm
- drilling hole diameter 19 × 16.5 mm
- it is necessary to purchase a cylinder insert
- it is necessary to purchase a bolt as required:
 - 252254 – straight bolt, type 477
 - 229995 – curved bolt, type 460
- possible to purchase an angled striking plate

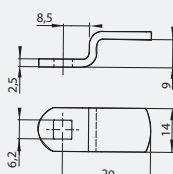


drilling a hole

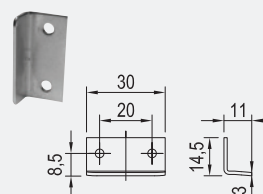
ACCESSORIES



Bolt	
252254	straight bolt, type 477



Bolt	
229995	curved bolt, type 460

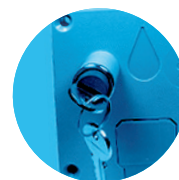


Angled striking plate 30 mm	
L00007	nickel

- counterpart for screwing



Removable insert	
	p. 3.31



Coin lock

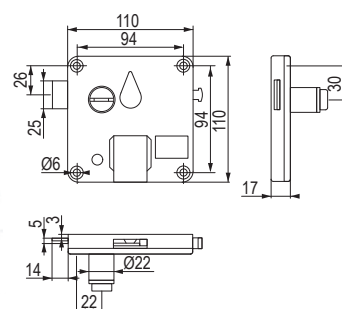


Coin lock type 70

Basic

code	description
336218	right
336219	left

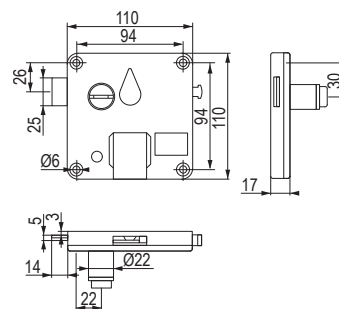
- for coins: 5 CZK, 1 €, 1 PLN or 100 HUF
- suitable for public spaces
- when the key gets lost, the cylinder insert can be replaced by another one using master key and disassembly key
- up to 700 key combinations
- packaging includes: 1 pc of lock, 2 pcs of keys, 1 pc of coin trap



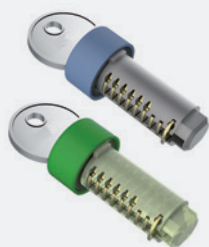
Spa

code	description
336220	right
336221	left

- for coins: 5 CZK, 1 €, 1 PLN or 100 HUF
- ideal for wet environments, swimming pools, spas, etc.
- cylinder and bolt made of fibreglass reinforced with polyamide
- when the key gets lost, the cylinder insert can be replaced by another one using master key and disassembly key
- up to 700 key combinations
- packaging includes: 1 pc of lock, 2 pcs of keys, 1 pc of coin trap
- minimal order – 20 pcs



ACCESSORIES



**Spare insert
for coin lock**

336222	Basic version
336223	Spa version



Disassembly key for coin lock

336224	for both Basic and Spa versions
---------------	---------------------------------



**Master key
for coin lock**

336225	for both Basic and Spa versions
---------------	---------------------------------



Locks with mechanic numerical code



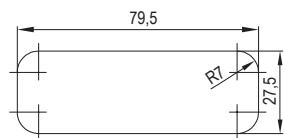
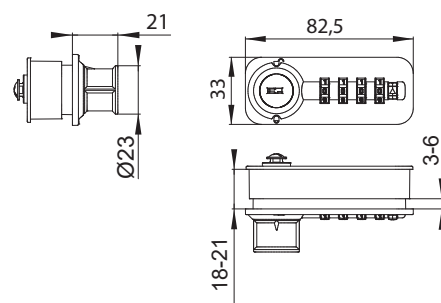
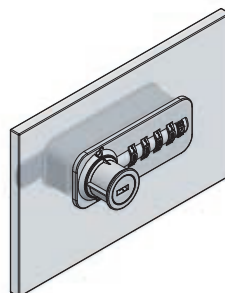
Lock type 57.01 – fix version



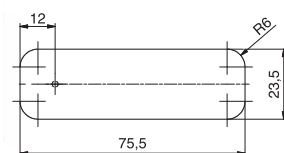
- 4 coding characters, that is 9999 combinations
- simple setting and changing of the code
- loss of key becomes irrelevant
- left, right and vertical variants are available
- emergency key in case you forget the code
- selected colour combinations can be supplied on demand (limited by minimum ordered quantity of the selected colour)

code	orientation	colour
282255	right	black
282256	left	
293954	right	white

i it is necessary to purchase a bolt, see p. 3.38



Drawing of a hole in a board 18-21 mm for lock types 57, 58 and 59.



Drawing of a hole in glass 3-6 mm.

ACCESSORIES



Emergency key for locks type 57, 58 and 59

282259 key version Z0001, nickel

- for emergency opening of lock types 57, 58 and 59 in case you forget the code



Code finding pin for lock types 57 and 59

193598 nickel

- to find currently set code



Lock type 58.01 – free version



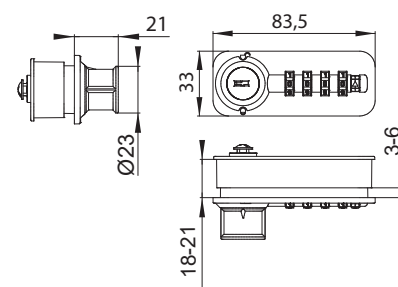
Public (free) version

The user selects any free cabinet, sets a code and locks the lock.

To unlock, the user sets the code and the lock unlocks.

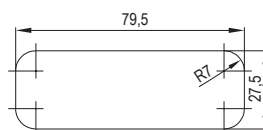
The lock is reset and ready for a new user.

- 4 coding characters, that is 9999 combinations
- loss of key becomes irrelevant
- left, right and vertical variants are available
- emergency key in case you forget the code
- selected colour combinations can be supplied on demand – limited by minimum ordered quantity of the selected colour

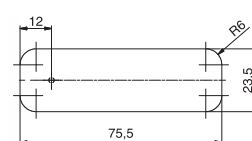


code	orientation	colour
345431	right	black
345432	left	
346614	right	white

❗ it is necessary to purchase a bolt, see p. 3.38



Drawing of a hole in a board 18-21 mm for lock types 57, 58 and 59.



Drawing of a hole in glass 3-6 mm.

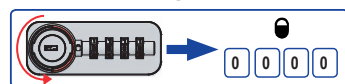
Lock type 58 – common use – locking and unlocking



The dials are set to 0.



Set the locking code.



Lock the lock using the knob until it stops. The number plates automatically revert to zeros.



For unlocking, set the code you locked the lock with.



Unlock the lock using the knob until it stops. The number plates automatically revert to zeros.



The lock is ready for next locking.

Lock type 58 – emergency opening with emergency key and resetting the code



Dial status – the unlocking code is unknown.



Turn the key until you hear a click.



Rotate each number plate until they rotate freely.



Turn only the key back by 180°.



Turn the knob towards the dials and remove the key.



The lock is unlocked and reset.



Lock type 59 – fix version

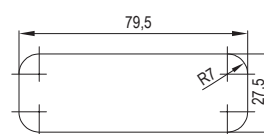
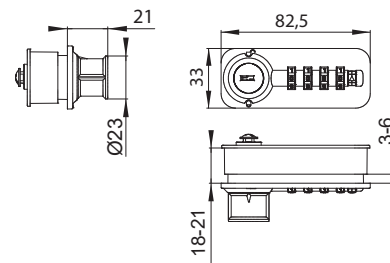
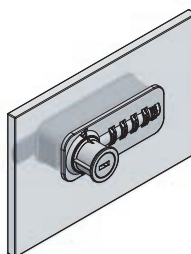


Code lock type 59 is a new generation of lock replacing type 57, the fix code.

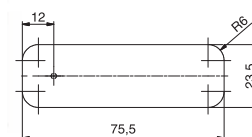
- dimensions and design are identical to the lock 58
- the setting and changing of the code is done with a programming stick that is inserted into a hole in the knob

code	orientation	colour
344354	right	black
343443	left	
343442	right	white

! it is necessary to purchase a bolt, see p. 3.38



Drawing of a hole in a board
18-21 mm
for lock types 57, 58 and 59.



Drawing of a hole in glass 3-6 mm.

Video manuals

First user code setting:



User code change:



Reset of the user code with a master key:



ACCESSORIES



**Emergency key
for locks type 57, 58 and 59**

282259 key version Z0001, nickel

- for emergency opening of lock types 587 and 58 in case you forget the code



**Code finding pin
for lock types 57 and 59**

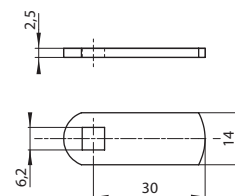
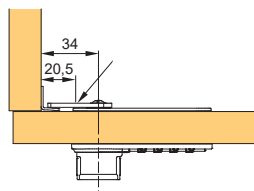
193598 nickel

- to find currently set code

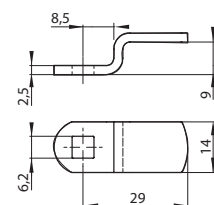
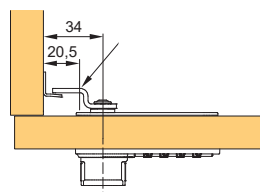


Bolts

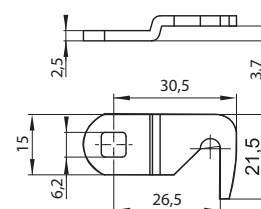
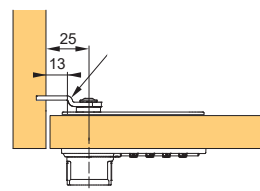
code	description
252254	straight bolt, type 477



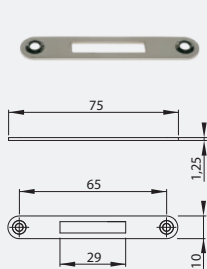
code	description
229995	curved bolt, type 460



code	description
281977	bolt with a hook, type 2-027



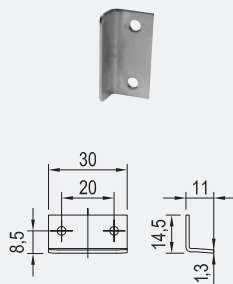
ACCESSORIES



Mortise counterpart

223468	nickel, length 75 mm
---------------	----------------------

- more angled striking plates on p. 3.47



Angled striking plate 30 mm

L00007	nickel
---------------	--------



SYSTEMS OF CYLINDER LOCKS

All as a standard.
Our locking programme for all types of furniture.



ELECTRONIC SYSTEMS

New possibilities in furniture design. Maximum comfort thanks to innovative technology.



INTERLOCK LOCKING SYSTEMS

One for all.
Easy central locking for containers and filing cabinets.



SYSTEMS OF CODE LOCKS

Key always at hand:
With your own code which cannot be lost.



LEHMANN®
LOCKING SYSTEMS WITH ADDED VALUE

LEHMANN Vertriebsgesellschaft mbh & Co. KG
Postfach / P.O.B. 26 20 • D-32383 Minden
Fon +49 571/50 599 - 0 Fax +49 571/50 599 - 822
info@lehmann-locks.com
www.lehmann-locks.com

locks with mechanic numerical code

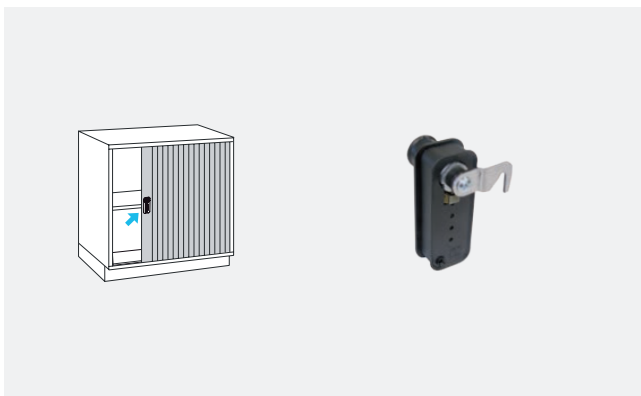


Other lock options
with mechanic numerical
code on demand

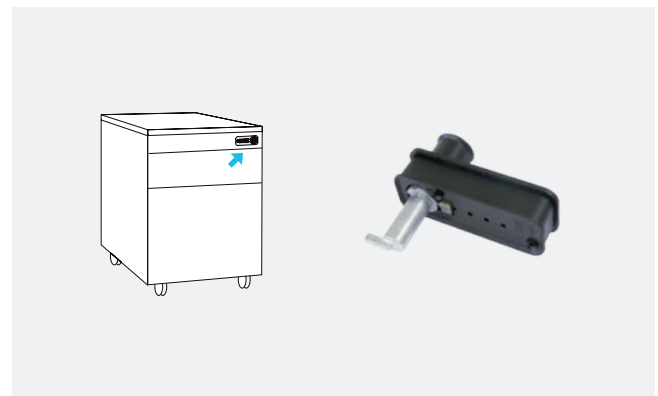


3

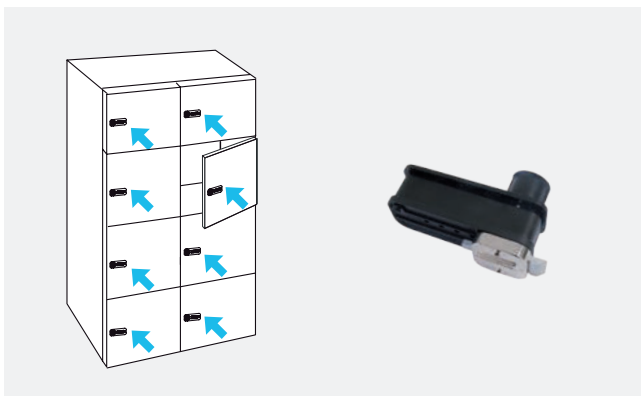
Sliding door lock



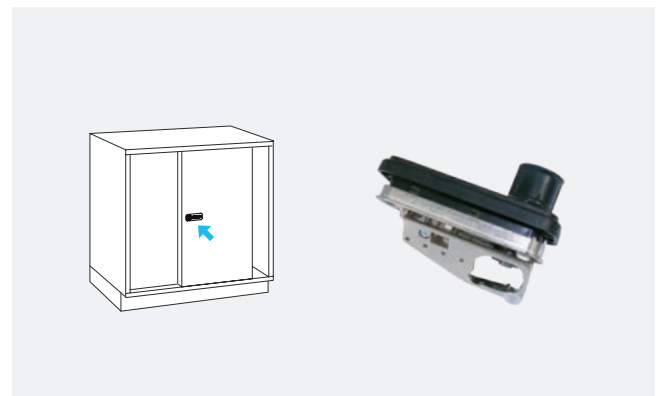
Central lock



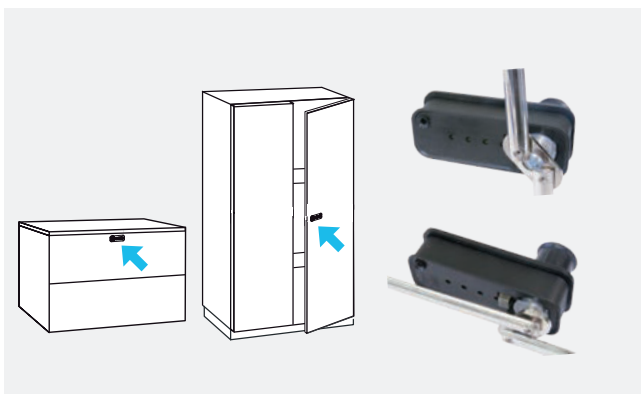
Drawer lock



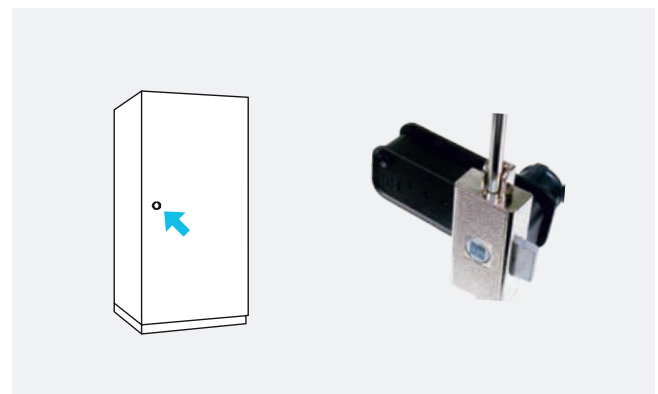
Sliding door lock



Shooting bar lock



Three-point lock





Rotary locks with mechanic numerical code

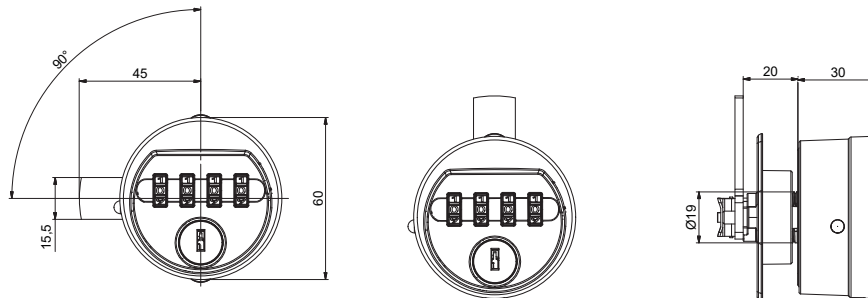
N Lock type 60 – fix version

code	type of lock	version	colour
309272	60	fix	black
309278			white

- the lock is always unlocked with the same code
- after locking, the number plates rotate to zeros by themselves = protection against misuse of the set code
- suitable for mounting in glass or sheet metal – material thickness up to 11 mm
- when using adapter 309274, mounting in wood is also possible – material thickness 10-20 mm
- locking mechanism made of zinc from cast metal
- the body of the lock is made of special plastic, reinforced with glass fibre
- possibility to choose the bolt

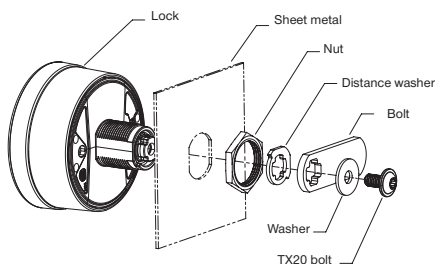


- ❗ it is necessary to purchase the bolt, see the Mandatory accessories table

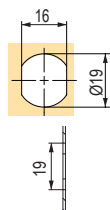


Mounting of the lock

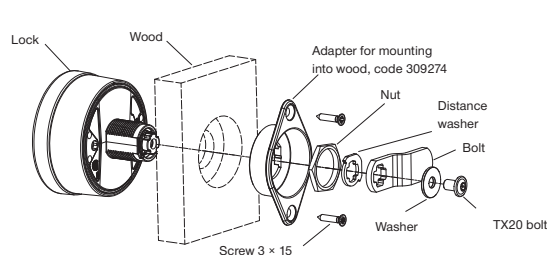
Drilling into sheet metal (material thickness 0.7-11 mm)



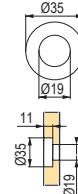
Drilling into sheet metal



Drilling into wood (material thickness 12-20 mm)



Drilling into wood





N Lock type 61 – free version

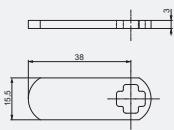
code	type of lock	version	colour
336216	61	free	black
336217			white

- the user selects any free cabinet, sets a code, and locks the lock
- to unlock, the user sets the code and the lock unlocks
- the lock is reset and ready for a new user

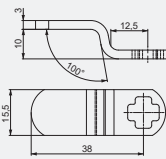
! it is necessary to purchase the bolt, see the Mandatory accessories table



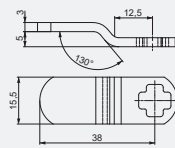
MANDATORY ACCESSORIES FOR LOCKS 60 and 61



309275 bolt 310, straight

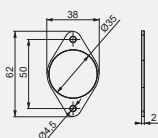


309277 bolt 400, curved

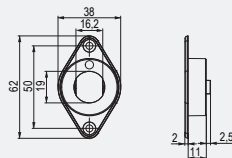


309276 bolt 390, curved

OPTIONAL ACCESSORIES FOR LOCKS 60 and 61



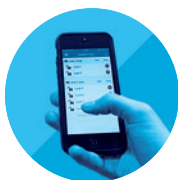
350805 plastic insert for mounting into thin wood, must be combined with adapter 309274



309274 adapter for mounting into wood



282259 emergency key



Electronic locks



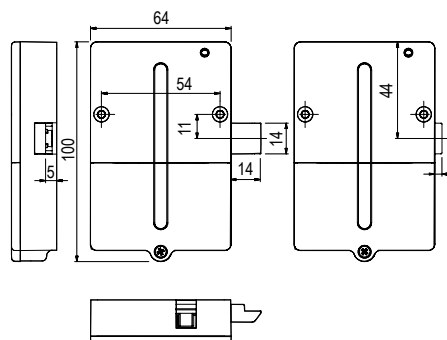
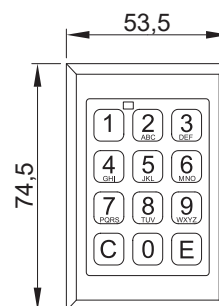
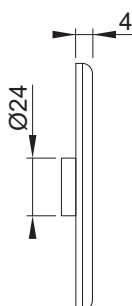
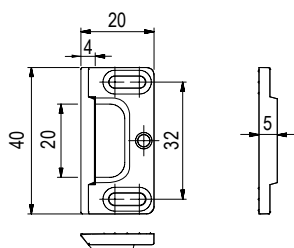
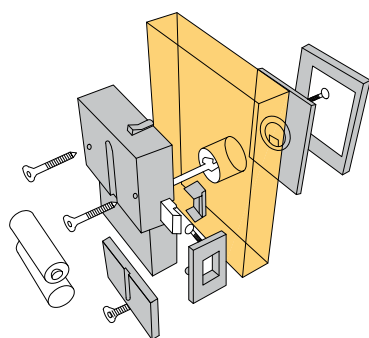
M400 TA lock with keypad

code	description
142112	set with a silver keypad
227172	set with a black keypad
362947	keypad handle, silver
362948	keypad handle, black

- the set includes a lock, striking plate for the lock, keypad, connection cable and batteries

Possibilities of this system:

- locking with a one-time code – locking and unlocking are done by entering your own code (3-10 digits long) and after unlocking the lock is ready for another user who can lock the lock using a different code of his choice (3-10 digits long); in this version, it is also possible to set regular unlocking at a certain time in case of an intentional locking of an empty cabinet which would limit its use
- locking using fixed code – for locking and unlocking, the same code in the length of 3-10 digits is used
- the locking version can be changed as desired by the customer
- the lock always has a master code that allows you to open the lock if you forget the code (the master code can also be changed)
- in case of forgetting both codes, the lock can be reset to the factory setting using the reset code (the code can also be changed)
- it is recommended to change the batteries every two years; low battery is indicated by a flashing LED diode on the keypad





Lock with Bluetooth control

Electronic lock M400BT

code	description
282251	with Bluetooth function

Advantages of this system:

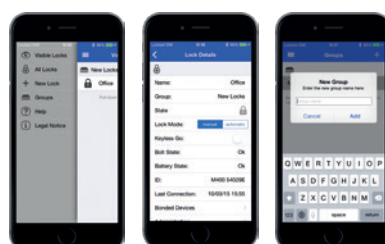
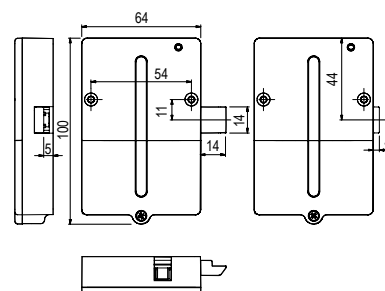
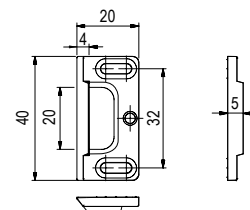
- you have your smartphone = you have your key
- use the application on your smartphone to control the lock or a group of locks; information about battery status
- one lock can be paired with 4 devices (can only be controlled by one device)
- free application for iPhone, iPod or iPad, and for devices running on the Android system, an extended paid application is available as well
- on demand - solutions for central lock of containers, high cabinets, etc.
- high security

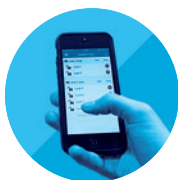
Free application:

- adding and removing paired locks
- unlocking and locking the lock
- identification of the lock status (closed/opened)
- low battery warning

Paid application – several options that include:

- KeylessGo – automatic unlocking/locking if the “remote control” is in the signal range
- grouping of locks and their complete control
- identification of signal strength (distance from the lock)
- possibility of blockage using a PIN
- possibility to reset to factory settings





LOCKS

Lehmann electronic locks



Chip locks

Electronic locks with chip cards are suitable in places where you want to comfortably deal with locking without using a key.

The lock is based on an electronic lock M400, M410 or M610 in connection with an adapter for contactless communication.



Chip locks with 13.56 MHz MIFARE® Classic / DESFire EV1, EV2

Locks can be used in two modes – fix and free. Factory setting is in the fix mode, the mode card can switch it to the free one.

Fix mode

For a user with own cabinet. The lock can only be controlled by a card paired with the lock. The lock can be paired with up to 30 user cards using a master card.

Free mode

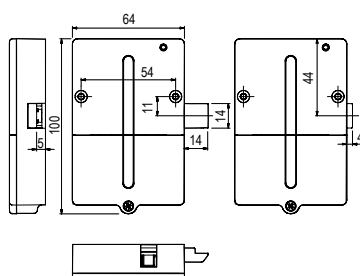
The card is paired with the lock by locking it, and this pairing is then cancelled by unlocking the lock. Ideal for spaces where the user chooses a cabinet.

Steps: The user selects any free cabinet, sets a code, and locks the lock. At this point, the card is paired with the lock and no other card can be used for this lock. At the same time, this card cannot be used for another lock. The lock is unlocked by attaching the card which locked the lock.

Chip locks

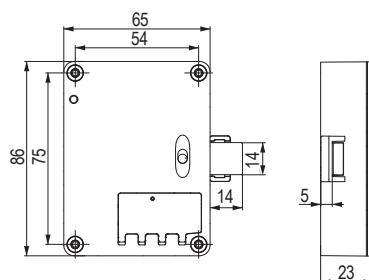
M400

- the basic type of electronic lock M400
- with an adapter, a reader can be attached on the inside of the door



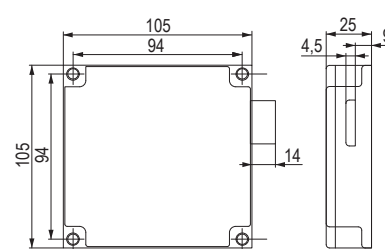
M410

- smaller dimensions in comparison with the M400
- thanks to a symmetrically placed bolt, the lock is right-left
- mounting into sheet metal, HPL and wood (using an adapter)
- micro USB for updates and service
- battery type CR123A with lifetime up to 25,000 cycles (battery included in the packaging)
- resistant to disinfectants
- can be combined with readers L033-A01 or L033-A02



M610

- same drilling as for Lehmann coin lock
- protection rating of the lock **IP55**
- mounting into sheet metal, HPL and wood (using an adapter)
- micro USB for updates and service
- 2x battery type CR123A with lifetime up to 25,000 cycles (battery included in the packaging)
- resistant to cleaning agents and disinfectants
- can only be combined with the L033-A03 reader (protection rating IP65)

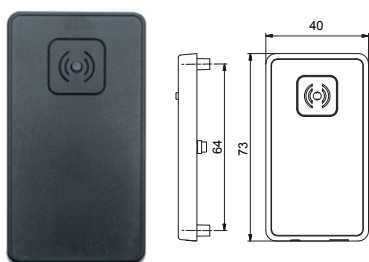




Readers

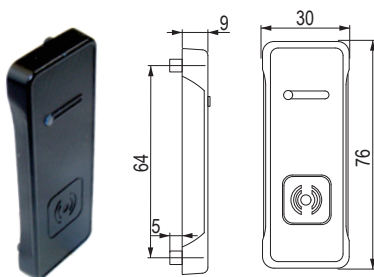
L033-A01

- mounting into the inside of a cabinet with an adapter 290284
- does not have IP protection



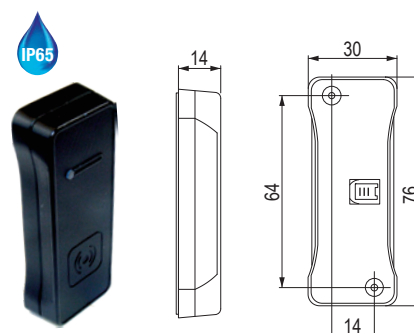
L033-A02

- mounting on a cabinet
- does not have IP protection



L033-A03

- mounting on a cabinet
- protection IP65



Set of locks with readers

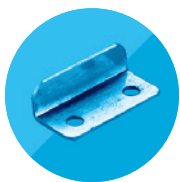
code	type of lock	type of reader	package contents	reader mounting
350420	M400	L033-A01	lock, reader, batteries, counterpart, fittings	inner and outer sides of doors
350423		L033-A02	lock, reader, spacer for the reader, batteries, counterpart, fittings	only the outer part
350426	M410	L033-A01	lock, reader, batteries, counterpart, fittings	inner and outer sides of doors
350429		L033-A02	lock, reader, spacer for the reader, batteries, counterpart, fittings	only the outer part
350432	M610, right	L033-A03		
350435	M610, left	L033-A03		

- possible order from 1 pc
- for sheet metal doors – only models with spacer may be used (L033-A02 or L033-A03)
- the spacer in combination with the reader functions as a handle
- chip cards are not included in the set (see accessories)

ACCESSORIES

Chip cards

350800	user card	350801	card set: master, update and service	350802	installation card	350803	set of cards
<ul style="list-style-type: none"> • end user card • can be used for existing MIFARE systems (functionality needs to be tested separately) 		<ul style="list-style-type: none"> • this set is required for programming user cards <ul style="list-style-type: none"> – master – a programming card – update – to update the software – service – a card for making a master card copy 		<ul style="list-style-type: none"> • this card is not required, it is an optional accessory • used to test the functionality of the lock in factory settings, i.e. serves only for furniture manufacturers • the card cannot be used for a lock programmed with a master card 		<ul style="list-style-type: none"> • this set is not required, it is an optional accessory <ul style="list-style-type: none"> – mode – this card switches between the fix and free modes – ssound – this card can turn off the lock sound (beep sounds when unlocking and locking); the low battery sound will always be audible – reset – this card resets the lock to factory settings 	



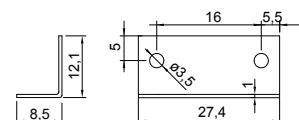
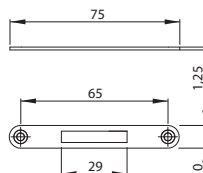
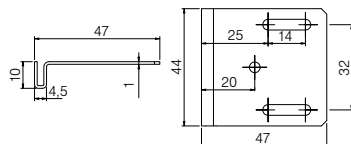
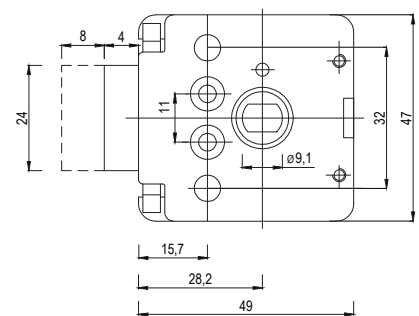
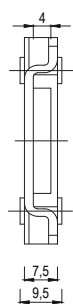
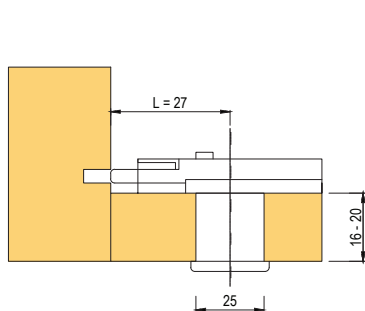
LOCKS

other locks and accessories

Lock FAB 462

code	description
88289	nickel
11245	brass

- right-left version
- various key combinations



Angled striking plate 44 mm

code	description
L00008	nickel

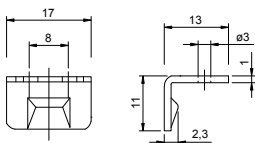
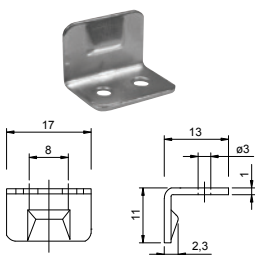
- the packaging includes a separate pin and a screw (they do not have to be connected)

Mortise counterpart

code	description
223468	nickel, length 75 mm

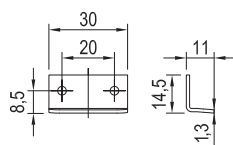
Angled striking plate 27 mm

code	description
134636	nickel



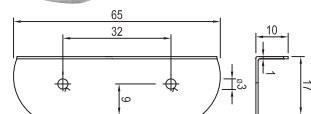
Counterpart

code	description
L00065	striking plate for a bolt



Angled striking plate 30 mm

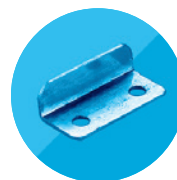
code	description
L00007	nickel, counterpart for screwing



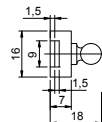
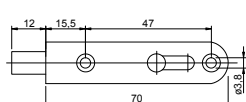
Angled striking plate 65 mm

code	description
11230	nickel

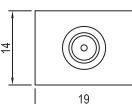
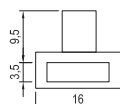
other locks and accessories



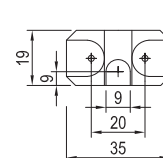
3

**Corner furniture bolt**

code	description
L00064	bolt, nickel

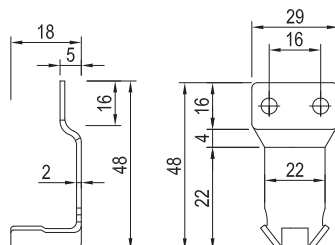
**Additional pin**

code	description
91214	9 mm

**Central lock counterpart for a wooden drawer**

code	description
11248	plastic

- usage: mounting on the side of the drawer
- central lock pin slides into the bottom groove
- primarily designed for wooden drawers

**Central lock counterpart for roller bearing slides with a side (Metabox)**

code	description
13408	for locking and blocking the opening of more than one drawer; plastic

- usage: mounting on the bottom of the drawer

Central lock counterpart for roller bearing slides with a side (Metabox)

code	description
11299	only for locking, varnished metal

- usage: mounting on the bottom of the drawer