

# 13



# aluminium programme



Aluminium frames	13.3 – 13.8
Splashbacks	13.9
Make Me wall system	13.11 – 13.12
“QB it” shelf system	13.13
Vertiko wall system	13.14



# Aluminium frames

- aluminium frames are custom made according to customer requirements – as standard we offer frames with hinges, frames for Aventos lifts and slide frames (including fittings)
- aluminium frames are delivered including glass and assembled according to requirements, with drilled or milled holes for fittings
- we can of course drill holes for handles according to the customer's requirements
- the holes in the profile itself have a diameter of 4.9 mm and 7 mm in glass; a plastic spacer is included for every hole to prevent glass breakage
- for the price calculation and placing an order – always use the current version of the form, which can be found at our website [www.demos-trade.com](http://www.demos-trade.com)

## Overview of colours



aluminium



anodised aluminium



black



black, gloss



grounded aluminium



champagne



dark stainless steel



light stainless steel



grounded black



bronze



white



brown



anthracite

## Lacobel palette

Lacobel
RAL 0337
RAL 0627
RAL 1013
RAL 1015
RAL 1236
RAL 1586
RAL 7035
RAL 9003
RAL 9005
RAL 9006
RAL 9007
RAL 9010

- Lacobel and Matelac glass sample book is available upon request

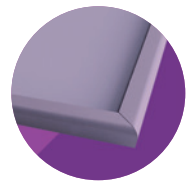
## Matelac palette

Matelac
mirror – bronze
mirror – silver
mirror – graphite
RAL 9003
RAL 9005
RAL 9010
7M21

## Types of glass


clear	mirror
antisol bronze	master (carre)
antisol graphite	master lens
krizet	master ligne
sand	master point
satinato	master ray
lacomat	master shine
satinato bronze	
satinato grafit	
screen	
venus VG 10	
stopsol bronze	

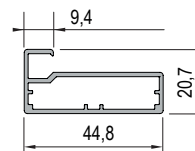
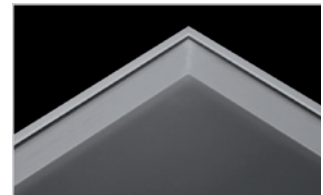
- glass thickness 4 mm
- glass sample book is available upon request



## Modena

<b>1</b>	<b>3</b>	<b>7</b>	<b>9</b>
aluminium	black	dark stainless steel	grounded black

- weight: 0.5 kg/m
- glass filling for frame is 6 mm smaller compared to outer frame dimension
-  for a diagram showing position of connecting component, see p. 13.7



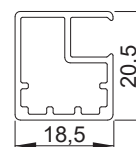
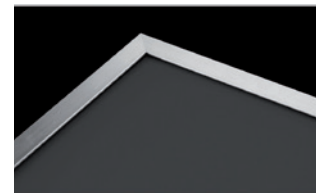
## BRW

<b>1</b>	<b>3</b>	<b>5</b>	<b>6</b>	<b>7</b>
aluminium	black	grounded aluminium	champagne	dark stainless steel

<b>8</b>	<b>9</b>	<b>11</b>	<b>12</b>	<b>13</b>
light stainless steel	grounded black	white	brown	anthracite

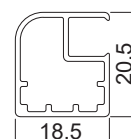
- weight: 0.27 kg/m
- glass filling for frame is 24 mm smaller compared to outer frame dimension



## Ravena

<b>1</b>
aluminium

- weight: 0.27 kg/m
- glass filling for frame is 24 mm smaller compared to outer frame dimension






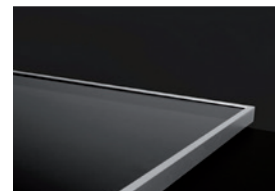
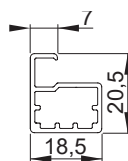
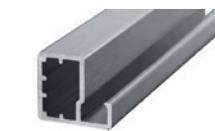
## Verona

<b>1</b>	<b>3</b>	<b>4</b>	<b>5</b>	<b>6</b>
aluminium	black	black, gloss	grounded aluminium	champagne

<b>7</b>	<b>8</b>	<b>10</b>
dark stainless steel	light stainless steel	bronze

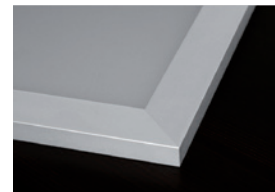
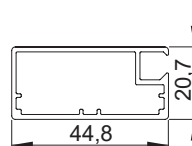
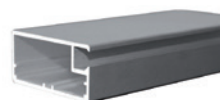
- weight: 0.24 kg/m
- glass filling for frame is 5 mm smaller compared to outer frame dimension
-  for a diagram showing position of connecting component, see p. 13.7



## Vivaro


<b>1</b>	<b>3</b>	<b>6</b>	<b>7</b>	<b>8</b>	<b>11</b>
aluminium	black	champagne	dark stainless steel	light stainless steel	white

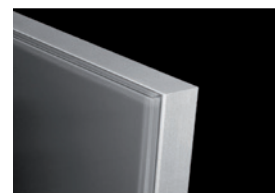
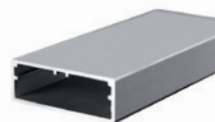
- weight: 0.53 kg/m
- glass filling for frame is 76 mm smaller compared to outer frame dimension



## Imola

<b>1</b>	<b>3</b>
aluminium	black

- weight: 0.42 kg/m
- for a diagram showing position of connecting component, see p. 13.7
-  not suitable for transparent glass (visible glued joint)



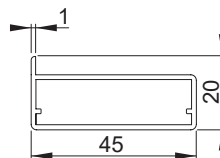
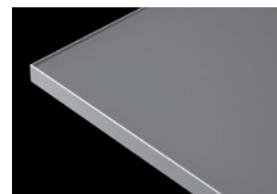




## Pisa

1	3
aluminium	black

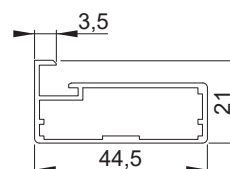
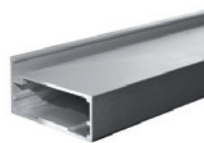
- weight: 0.44 kg/m
- glass filling for frame is 3 mm smaller compared to outer frame dimension
- ❗ not suitable for transparent glass (visible glued joint)



## Corleone

1	3	6
aluminium	black	champagne

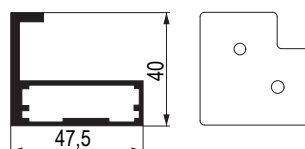
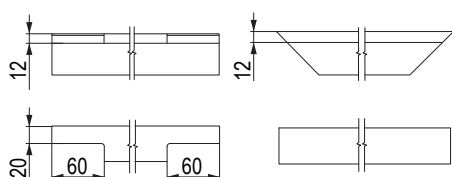
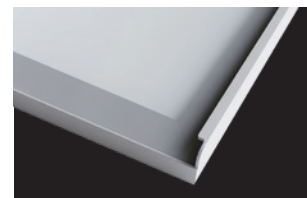
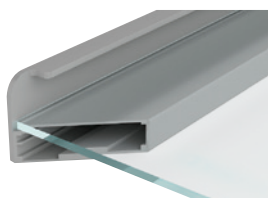
- weight: 0.50 kg/m
- glass filling for frame is 4 mm smaller compared to outer frame dimension
- ❗ maximum recommended frame size is 1,500 × 600 mm
- 🔗 for a diagram showing position of connecting component, see p. 13.7



## N Tropea

1	3
aluminium	black

- used with the Corleone profile
- 2 types of handle milling
- maximum width is 730 mm



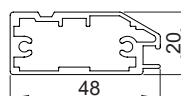
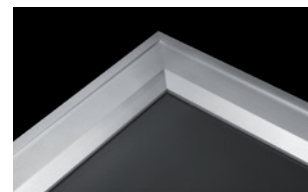
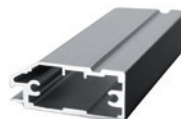


## Siena

1

aluminium

- weight: 0.72 kg/m
- glass filling for frame is 87 mm smaller compared to outer frame dimension

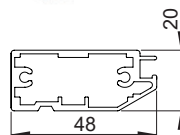
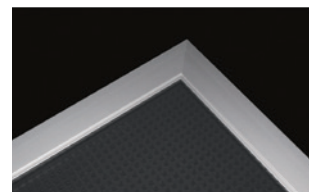


## Palio

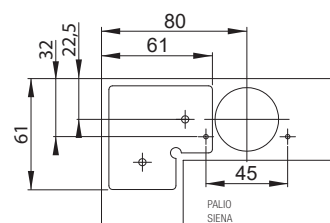
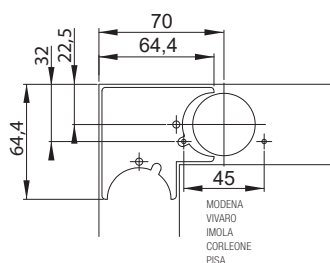
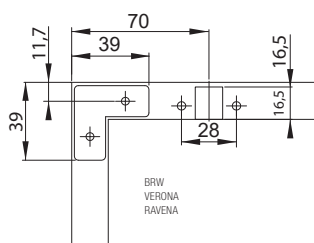
1

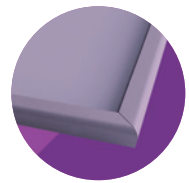
aluminium

- weight: 0.72 kg/m
- glass filling for frame is 87 mm smaller compared to outer frame dimension

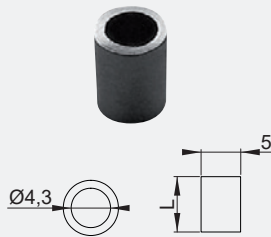


### Diagrams showing position of connecting components





## ACCESSORIES



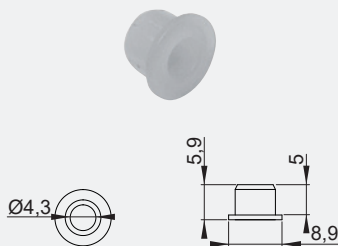
### Grommet without rim

<b>144516</b>	metal, height 5.6 mm
<b>191970</b>	metal, height 7 mm



### Bolt for frames

<b>92598T</b>	M4 × 8
---------------	--------



### Grommet with rim

<b>C0315</b>	plastic
--------------	---------



### Lock for narrow frame – inset door

<b>236415</b>	for 1 leaf
---------------	------------



### Lock for narrow frame – full overlay door

<b>236413</b>	for 1 leaf
---------------	------------



### Lock for narrow frame – full overlay door

<b>236414</b>	for 2 leaves
---------------	--------------





## Splashbacks

- glass cladding in various colours
- simple fixing on the wall directly behind the hob
- mounting with enclosed double-sided adhesive tape
- glass thickness 5 mm



### **N** Splashbacks

#### Black (RAL 9005)

code	width × height (mm)
<b>356145</b>	500 × 600
<b>356146</b>	500 × 800
<b>356147</b>	600 × 700
<b>356148</b>	900 × 700



#### White (RAL 9003)

code	width × height (mm)
<b>356149</b>	500 × 600
<b>356150</b>	500 × 800
<b>356151</b>	600 × 700
<b>356152</b>	900 × 700



#### Transparent glass + stainless steel strips

code	width × height (mm)
<b>356153</b>	600 × 700
<b>356154</b>	900 × 700



#### Grounded aluminium look

code	width × height (mm)
<b>356155</b>	500 × 600
<b>356156</b>	500 × 800
<b>356157</b>	600 × 700
<b>356158</b>	900 × 700







ALUMINIUM PROGRAMME

## Make Me wall system

### Make Me system

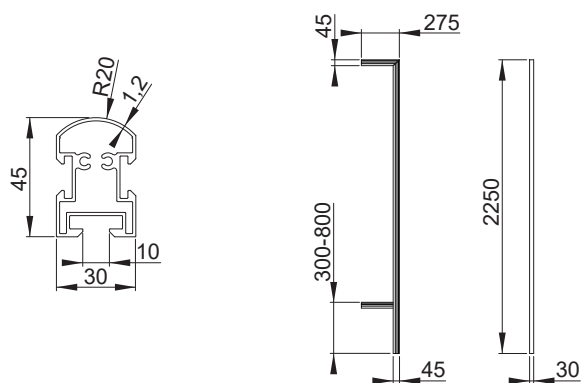
- Make Me is a variable aluminium wall system designed for modern interiors and wardrobes
- an attractively designed solution for storage space, simple installation and easy assembly
- individual components are supplied with connecting fittings for attachment to legs



### Aluminium leg

CP0001

aluminium leg



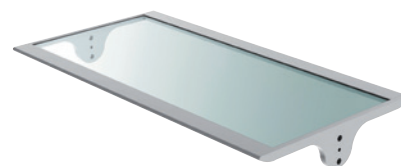
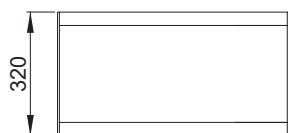
### Glass shelf

CP0002

length (L) 600 mm

CP0003

length (L) 900 mm



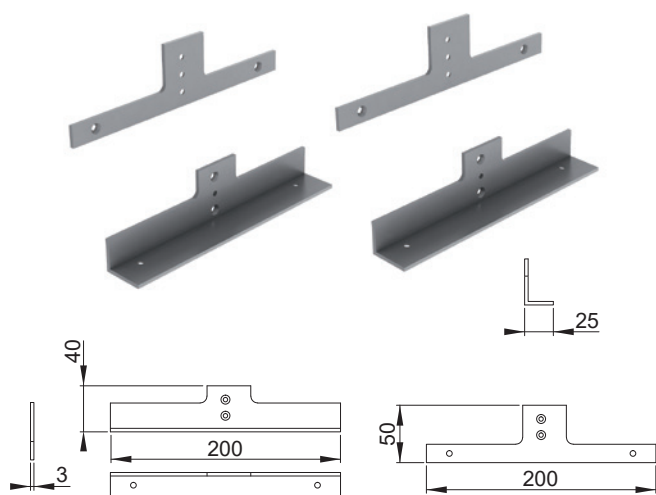




## Cabinet holder

**CP0004** complete set for one cabinet

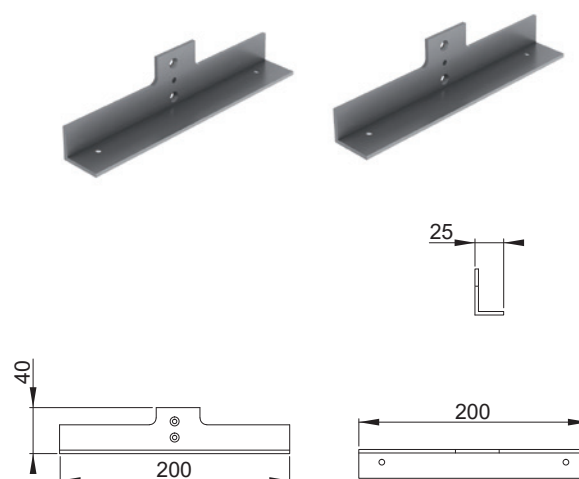
- set includes two pieces of flat upper plates, two pieces of lower L profile brackets and fittings for attachment to the leg



## Shelf holder – straight

**CP0005** complete set for one shelf

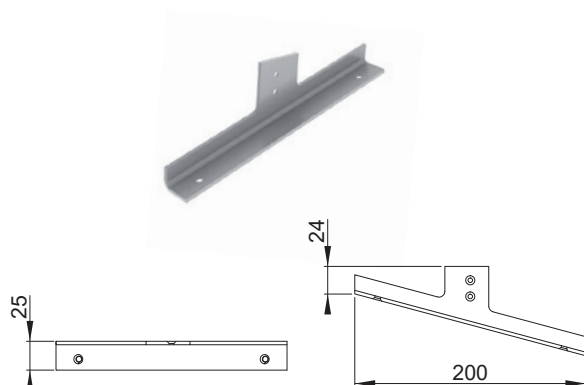
- the package includes complete fittings for attachment to the leg



## Shoe rack holder

**146982** complete set for one shelf

- the package includes complete fittings for attachment to the leg



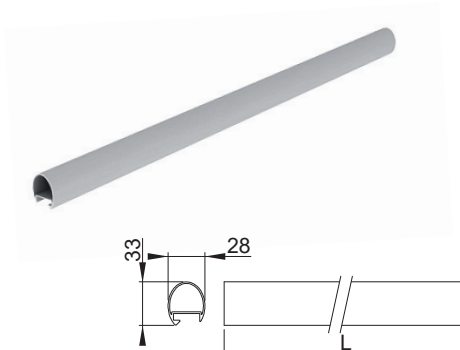
## Wardrobe rod

**146988** length (L) 600 mm

**134771** length (L) 800 mm

**146989** length (L) 900 mm

- the package includes complete fittings for attachment to the leg





ALUMINIUM PROGRAMME

## “QB it” shelf system

“QB it”  
system

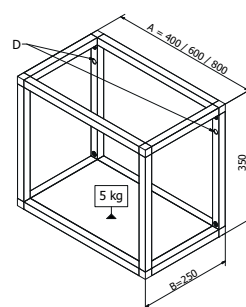
- profile system of shelves
- use instead of cabinets
- profile dimension 20 × 20 mm
- black colour



### N One shelf

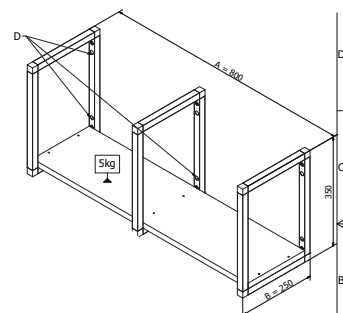
code	width (mm)	height (mm)	depth (mm)
<b>357804</b>	400	350	250
<b>357807</b>	600		
<b>357809</b>	800		

- different dimensions on individual request



### N Frame – one shelf

code	width (mm)	depth (mm)
<b>357959</b>	350	250





# Vertiko system

- wall system of vertical profiles and shelf and cabinet holders
- other surface treatments or dimensions on request



## N Wall profile 2,650 mm

code	colour
<b>309016</b>	silver

- the profile includes a control plate and a screw



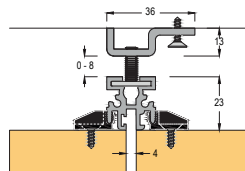
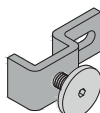
## N Plastic clip

code	description
<b>309018</b>	for attachment of the plate to the profile



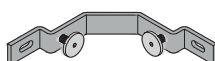
## N Wall bracket

code	description
<b>309017</b>	metal



## N Corner coupling of the profile

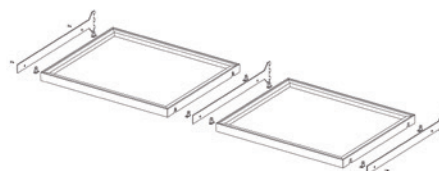
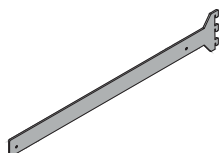
code	description
<b>309019</b>	wall profile coupling



## N Shelf holder

code	colour
<b>359335</b>	silver

- holder dimensions = 333 × 18 mm



## N Cabinet holder

code	colour
<b>359336</b>	silver

- holder dimensions = 450 × 96 mm

