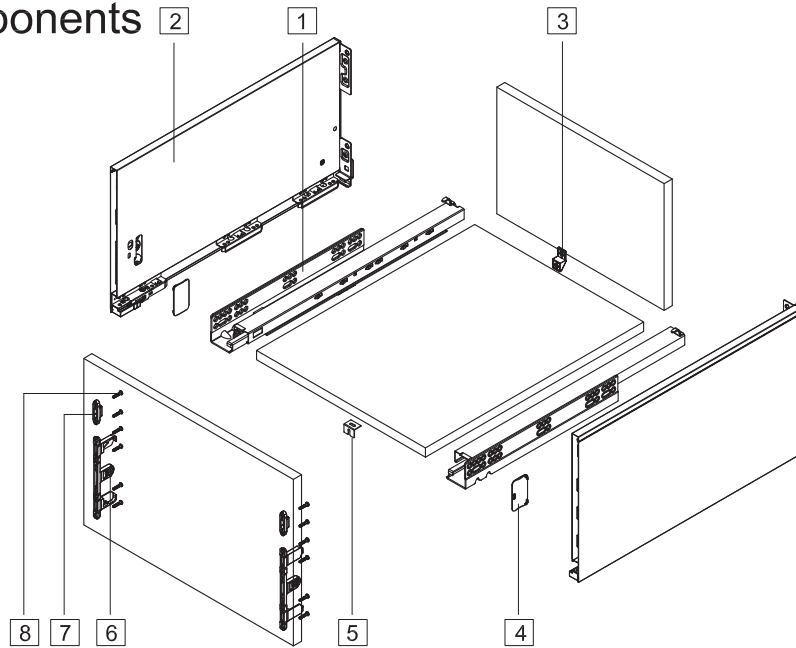


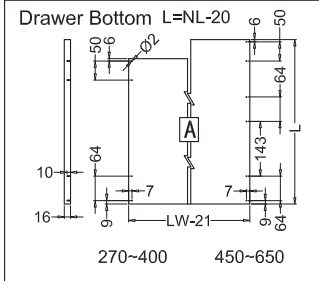
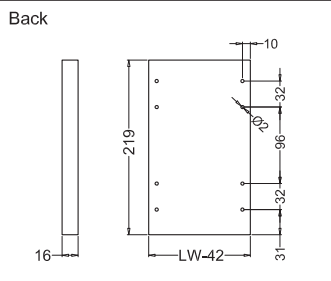
## Components



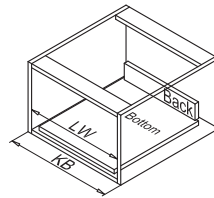
|  |  |
|--|--|
| 1. Cabinet profiles: L/R               |  |
| 2. 249 Drawer profiles: L/R            |  |
| 3. Back fixing(for wide drawer)        |  |
| 4. Side cover plate                    |  |
| 5. Bottom fixing(for wide drawer)      |  |
| 6. 185 Front fixing-brackets           |  |
| 7. 249 Front fixing-brackets           |  |
| 8. Front fixing-brackets screw (Ø4x17) |  |

| Nominal length | Internal drawer length | Min. installation length of drawer |
|----------------|------------------------|------------------------------------|
| 270mm          | 244mm                  | 275mm                              |
| 300mm          | 274mm                  | 305mm                              |
| 350mm          | 324mm                  | 355mm                              |
| 400mm          | 374mm                  | 405mm                              |
| 450mm          | 424mm                  | 455mm                              |
| 500mm          | 474mm                  | 505mm                              |
| 550mm          | 524mm                  | 555mm                              |
| 600mm          | 574mm                  | 605mm                              |
| 650mm          | 624mm                  | 655mm                              |

## Drawer Back and Bottom Dimensions

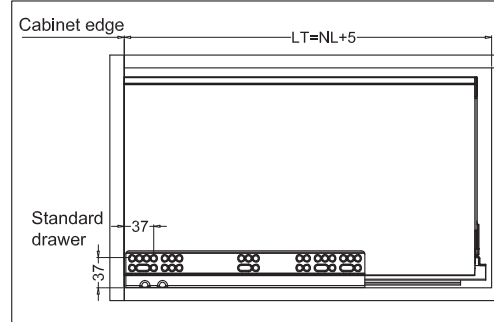


KB Cabinet width  
LW Internal cabinet width  
NL Nominal length



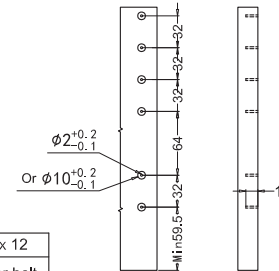
## Installation dimensions (mm)

Nominal slide length=NL



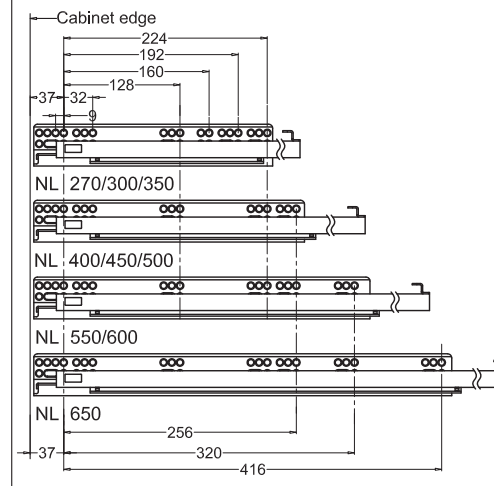
## Drawer installation dimensions (mm)

249 Drawer front



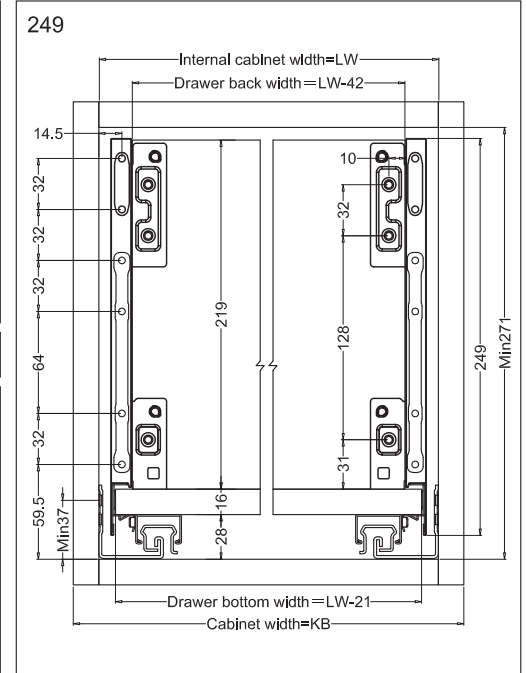
|            |             |
|------------|-------------|
| Ø2 x 12    | Ø10 x 12    |
| Wood screw | Anchor bolt |
| Ø4 x 17    | Ø10.3 x 10  |

## Screw positions of the sides



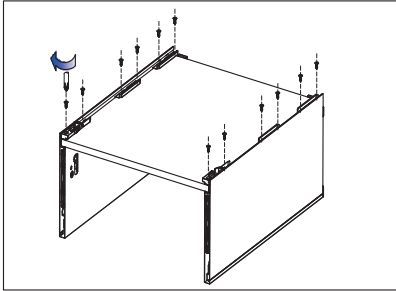
## Drawer installation dimensions (mm)

LW=Internal cabinet width

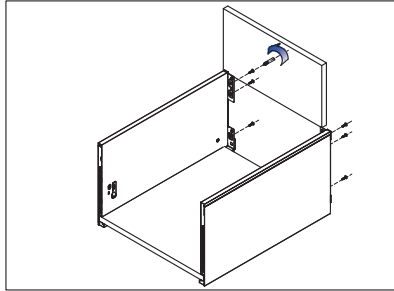


# Assembly, Removal and Adjustment

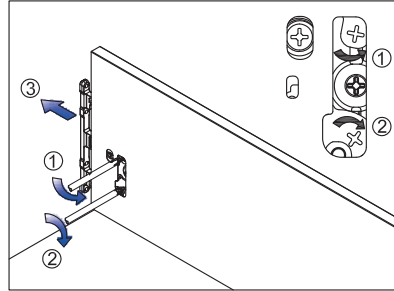
## Drawer assembly



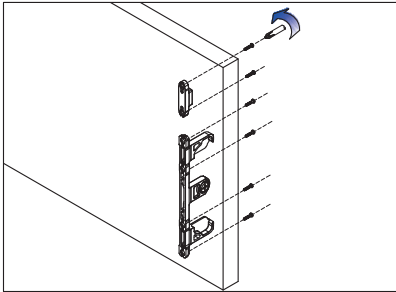
Bottom assembly



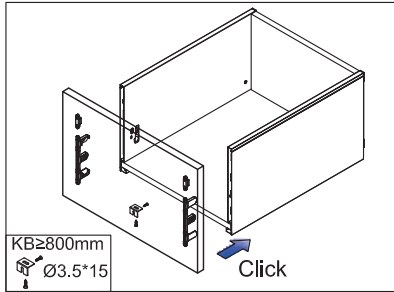
Back assembly



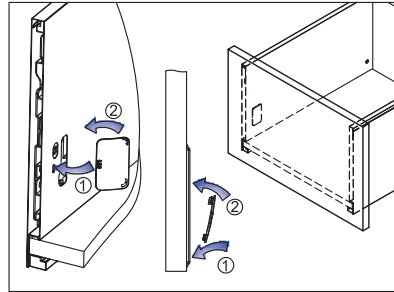
Front bracket release



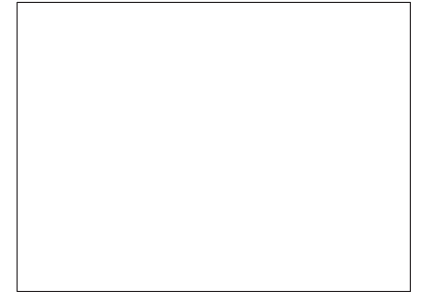
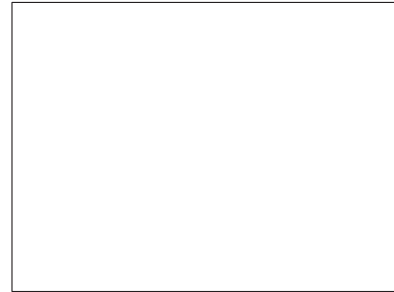
Front bracket assembly



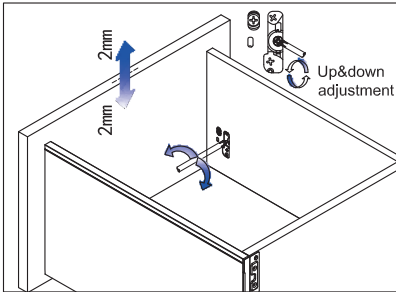
Front assembly



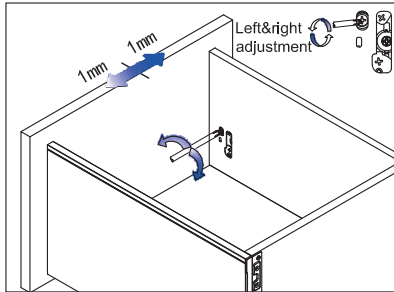
Inside Wall Cover assembly



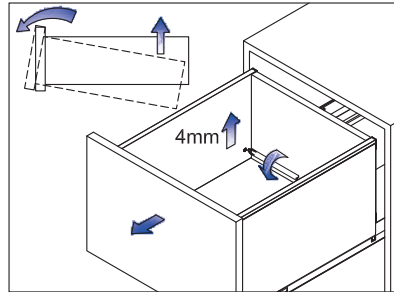
## Adjustment



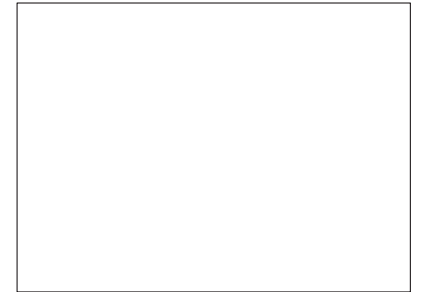
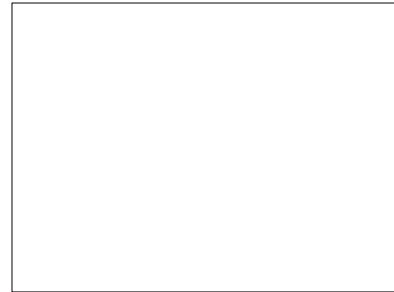
Up&down adjustment



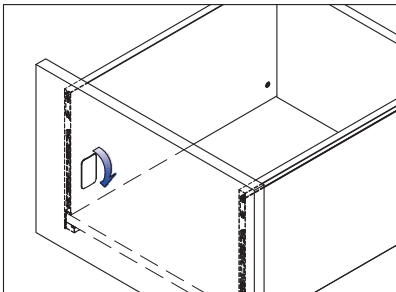
Left&right adjustment



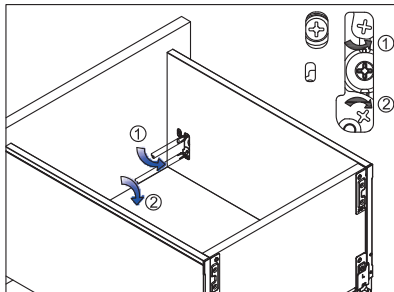
Front slope angle adjustment



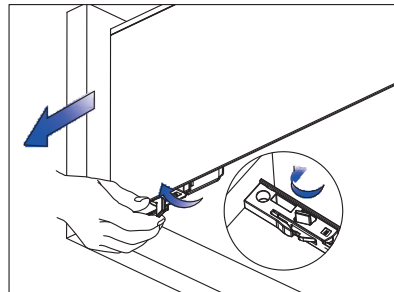
## Removal



Tip up the cover and pull out



Removal drawer front



Removal drawer

