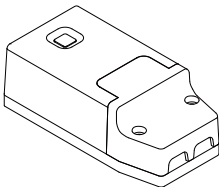




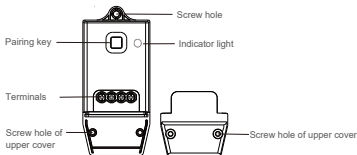
469139 StrongLumio driver for kinetic  
self powered switch 230V



EN user instructions

## Introduction

469139 dimming receiver controller can pair with kinetic switch to control light on/off/dimming. The 469139 has WiFi module, so can use mobile APP to remote control, and Amazon Alexa voice control.



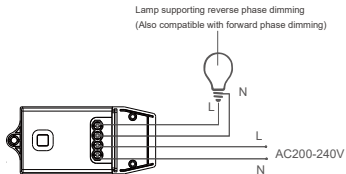
## Product Parameters

- Product Model: 469139
- Product Name: Single dimming controller
- Working Temperature: -20 ~ +55 ℃
- Control Distance: 50m(outdoor), 30m(indoor)
- Sensitivity: -110dBm
- Voltage Range: 200~240V 50/60Hz
- Rated Power: LED 100W
- Dimensions: L98\*W44\*H31mm
- Wireless Communication: WIFI 2.4G & RF 433Mhz
- Storage Capacity: Maximum 10 switch keys can be paired

Notice: The effective distance is measured by laboratory.

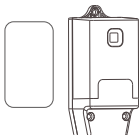
In the actual use, it will vary due to environment changes.

## Connection and installation



N= zero conductor

L= phase conductor



Installation method 1:  
Paste with double-sided  
adhesive tape on clean surface



Installation method 2:  
Fix into expansion screw  
in the wall

## Instruction for dimming function:

- 1.The device contains MOSFET component. Support Reverse Phase dimming and Forward Phase dimming. So can use lamps such as incandescent lamp, tungsten lamp and mostly LED lamp. If flickering occurs during dimming, replace the compatible lamp. Segmented dimmers and lamps with dimmers are not supported.
- 2.This controller only can pair with push button switch: after pairing is successful, long press the push button switch can adjust lamp brightness circularly. Release the switch when brightness reach your desired percentage. Also can use mobile APP or Alexa voice control lamp brightness.
- 3.This controller has a brightness memory function. When turn on the lamp again, it maintains the last brightness of lamp.
- 4.If you press switch key for long time, the controller dims from the darkest to brightest for 2 cycles, and will stop dimming when reaching maximum brightness after 2 cycles.
- 5.Long press to adjust the lamp brightness, if the interval time between 2 times of long press is less than 1 second, the dimm -ing direction ( dim or brighten ) will be reversed.

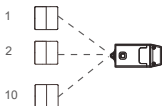


Long press dimming, if this time is brighten direction, release and long press again within 1 second, it will change to dim direction.

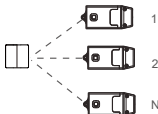
Long press dimming, if this time is dim direction, release and longpress again within 1 second, it will change to brighten direction.

## Combination method

This controller can pair with kinetic energy switch freely, can form two modes: one control multi , and multi control one.



Multi control one (Maximum 10 switch keys control one controller)

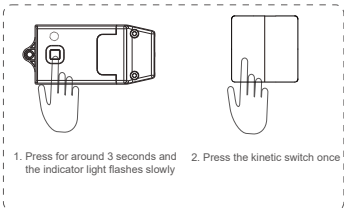


One control multi (One switch key can control multiple controllers, no limits)

## Ordinary Paring Method

1. Connect the controller's input to the power supply, press the controller "pairing key" around 3 seconds, release when indicator light flash slowly (flash 1 time per second).
2. Press the selected kinetic energy switch once (Do not press several times continuously), then indicator light is off, meansthe paring is successful.

- 3.If need to pair with multiple switches, repeat the above procedure.  
Please note one controller can be paired with maximum 10 switches.
- 4.After the pairing is successful, so can press the kinetic switch to control controller. In the case of no connected loads, you can know controller status by the on/off of indicator light.
- 5.Ordinary pairing method



## Directional pairing

In order to meet the user's usage habit of switch and to ensure the synchronization of one control multi mode, so we define the directional pairing mode. Directional pairing only support 2 keys or 6 keys push button switch.

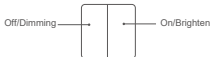
1. Connect the controller's input to the power supply, press the controller "pairing key" for around 3 seconds, release when indicator light flash slowly (flash 1 time per second).
2. Press push button switch left or right key four times (within 0.5 second), then the indicator light goes off, which means the pairing is successful.
3. After pairing is successful, left and right key of push button switch as a group, press the left key is OFF and the right key is ON, long press the left key is dimming and right key is brighten.

Directional pairing of push button (only supports 2 keys switches)



1. Press around 3 seconds, and the indicator light flashes slowly

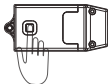
2. Quick press any key four times (within 0.5 seconds)



3. After pairing is successful, short press left key is off, and short press right key is On; long press left key is dimming, and long press right key is brighten

## Clear pairing

If you need to clear pairing of switch and controller, long press the controller "pairing key" for around 12 seconds, the indicator light will flash from slowly - quickly - stay still - off. After indicator light is off, which means that all paired switch information is cleared. If you need use this controller again, please pair again.



Press for around 12 seconds, the indicator light will from flash slowly - flash quickly - stay still - off.

## APP download

This controller can use mobile APP to remote control. Search "Kinetic switch" in App store or Google Play and download, or scan below QR code download.



iOS



Android

## Conect WIFI method

1. Use your mobile phone to download APP and follow the prompts to register your account in the APP.
2. Power on the controller, and confirm the indicator light is flash quickly (twice per second). If the indicator light is not flash quickly, keep pressing the "pairing key" around 10 seconds, the indicator light will flash from slow - fast - stay still, release when the indicator light is stay still. Then wait for 3 seconds, the indicator light will flash quickly (twice per second).
3. Click "Add device" in the APP, and select model „Single channel Dimming Controller (RF+WiFi)“
4. Then click "confirm indicator light rapidly blink" and enter password of WIFI, it starts to connect. If the indicator light goes off, which means APP connect successfully.
5. After the pairing with network is successful, so can use mobile APP to remote control, timed control and scene control.
6. If change WIFI router or change WIFI password, please repeat setting from second step.

Confirm the indicator light flashes quickly



Pairing the three devices as close as possible

## ECHO

1. In the Kinetic Switch APP, rename the controller devices, such as bedroom lights.
2. Add the skill SmartLife in Alexa App, and log in by using the account and password of the Kinetic Switch App.
3. Discover the device in the smart application selection in the Alexa app.
4. Now you can voice control the controller.



„Alexa, turn on/off bedroom light.“

## Dimming function

Dimming function is enabled for controller by default. If you need to disable the dimming function of the controller, you can operate as follows: long press the controller pairing button for 7 seconds, the indicator light will change from flashing slowly to flash quickly, and move your hand when flashing quickly. At this time, the indicator light will flash once in 2 seconds, which means that dimming function is disabled.

If you need to enable the dimming function again, repeat the above steps.

## Troubleshooting

1. Wifi failed internet pairing

Troubleshooting method: Please confirm the indicator light is blink rapidly (twice per second); If not blink rapidly, please set the indicator light to blink rapidly according to connect WIFI method.

Let router, controller and mobile phone as close as possible (within 5 meters).

## 2.The controller is off line in APP

Troubleshooting method: It may be the router connections quantity reaches the upper limit. Common router can connect maximum 15 pcs devices, please upgrade router and close devices which are not needed.

## 3.Controller cannot work after it is powered on

Troubleshooting method: If the loads exceed the rated current or short circuit, the fuse may blow. Please first exclude the short circuit, and confirm whether the load power is beyond the maximum support range.

## **When the load is LED lamp, the lamp will flash during dimming**

Troubleshooting method: Please check the parameters of the LED lamp to confirm that it can support Reverse Phase dimming or Forward Phase dimming. If it does not support, please replace lamp supports dimming function mentioned.



## **warning**

The product is meant for use as a wireless control unit, using specific remotes or a mobile phone app.

- CE marking together with Declaration of Conformity confirm compliance with valid EU directives.
- Restrictions and recommendations listed below fully comply to current safety measures. Therefore, we recommend all the users to follow preventive safety rules valid in their country during installation and maintenance of the device.
- The producer takes no responsibility for any possible damage or injury caused by using the product in a way which doesn't comply to these instructions, mainly by inappropriate installation or by ignoring warnings.
- The producer takes no responsibility for any malfunction, damage or destruction of the product caused by unprofessional change of parts, or by using non original parts.
- Do not disassemble or modify this device, otherwise the warranty will be void.
- Unplug the device before every cleaning. Clean these products with a soft dry or slightly moistened cloth. Avoid using scouring sponges, abrasive or aggressive and/or corrosion causing cleaners.
- Children may use the device only under supervision of a responsible person.
- Do not lay the cable on rough or sharp surface or any places which could cause damage.
- Use and store the device in dry places only, in interior or a space protected from weather conditions such as rain, dust or direct sunlight. It is not meant for outdoor use.



## **WEEE – Waste Electrical and Electronic Equipment**

These products must be recycled properly and should not be disposed as household waste. Incorrect disposal may cause environmental damage.

Importer: Démos trade, a.s.  
Škrobálkova 630/13  
718 00 Ostrava-Kunčičky  
Czech Republic



Producer: Shenzhen Ebelong Technology Co.,Ltd,  
4th Floor, 2nd Block, Hengmingzhu Shajing Industrial Park,  
Shajing Street, Bao'an District, Shenzhen, China



[https://www.demos24plus.com/content/wysiwyg/cz/Odkazy/  
STRONG/Manual\\_ERC1201.pdf](https://www.demos24plus.com/content/wysiwyg/cz/Odkazy/STRONG/Manual_ERC1201.pdf)